



CSK mouse mAb

Catalog No	BYab-14223
Isotype	IgG
Reactivity	Human;Rat
Applications	WB;ICC
Gene Name	csk
Protein Name	
Immunogen	Purified recombinant human CSK protein fragments expressed in E.coli.
Specificity	This antibody detects endogenous levels of CSK and does not cross-react with related proteins.
Formulation	Liquid in PBS containing 50% glycerol, 0.5% BSA and 0.02% sodium azide.
Source	Monoclonal, Mouse
Purification	The antibody was affinity-purified from mouse ascites by affinity-chromatography using epitope-specific immunogen.
Dilution	wb 1:1000 icc 1:50
Concentration	1 mg/ml
Purity	≥90%
Storage Stability	-20°C/1 year
Synonyms	C SRC;C SRC kinase;C src Tyrosine Kinase;C-SRC kinase;c-src tyrosine kinase;Csk A;CSK; CSK_HUMAN;CYTOPLASMIC TYROSINE KINASE;EC 2.7.10.2;MGC112926;MGC117393;MGC154049;P60 Src; Protein tyrosine kinase CYL;Protein-tyrosine kinase CYL;Proto oncogene tyrosine protein kinase;Tyrosine protein kinase CSK;Tyrosine protein kinase CSK;Tyrosine-protein kinase CSK;zgc:154049.
Observed Band	50kD
Cell Pathway	Cytoplasm . Cell membrane . Mainly cytoplasmic, also present in lipid rafts. .
Tissue Specificity	Expressed in lung and macrophages.
Function	catalytic activity:ATP + a [protein]-L-tyrosine = ADP + a [protein]-L-tyrosine phosphate.,function:Specifically phosphorylates 'Tyr-504' on LCK, which acts as a negative regulatory site. Can also act on the LYN and FYN kinases.,PTM:Autophosphorylation of Tyr-304 occurs only at abnormally high CSK concentrations in vitro.,similarity:Belongs to the protein kinase superfamily.

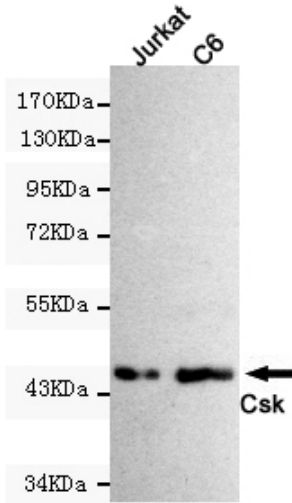
Nanjing BYabscience technology Co.,Ltd



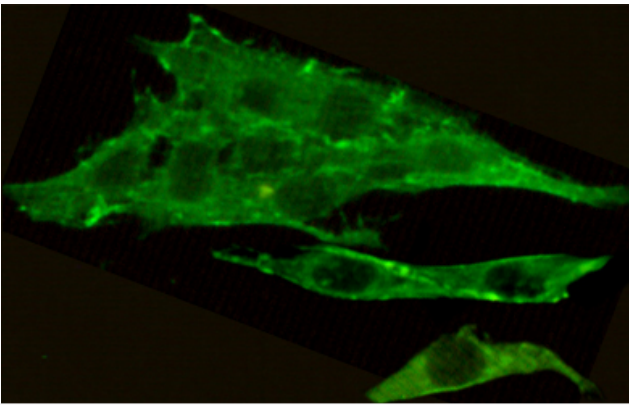
	<p>Tyr protein kinase family.,similarity:Belongs to the protein kinase superfamily. Tyr protein kinase family. CSK subfamily.,similarity:Contains 1 protein kinase domain.,similarity:Contains 1 SH2 domain.,similarity:Contains 1 SH3 domain.,subcellular location:Mainly cytoplasmic, also present in lipid rafts.,subunit:Interacts with PTPN8 (By similarity). Interacts with phosphorylated SIT1, PAG1, LIME1 and TGFB1I1.,tissue specificity:Expressed in lung and macrophages.,</p>
Background	<p>catalytic activity:ATP + a [protein]-L-tyrosine = ADP + a [protein]-L-tyrosine phosphate.,function:Specifically phosphorylates 'Tyr-504' on LCK, which acts as a negative regulatory site. Can also act on the LYN and FYN kinases.,PTM:Autophosphorylation of Tyr-304 occurs only at abnormally high CSK concentrations in vitro.,similarity:Belongs to the protein kinase superfamily. Tyr protein kinase family.,similarity:Belongs to the protein kinase superfamily. Tyr protein kinase family. CSK subfamily.,similarity:Contains 1 protein kinase domain.,similarity:Contains 1 SH2 domain.,similarity:Contains 1 SH3 domain.,subcellular location:Mainly cytoplasmic, also present in lipid rafts.,subunit:Interacts with PTPN8 (By similarity). Interacts with phosphorylated SIT1, PAG1, LIME1 and TGFB1I1.,tissue specificity:Expressed in lung and macrophages.,</p>
matters needing attention	Avoid repeated freezing and thawing!
Usage suggestions	This product can be used in immunological reaction related experiments. For more information, please consult technical personnel.



Products Images



Western blot detection of CSK in C6 and Jurkat cell lysates using CSK mouse mAb (1:1000 diluted). Predicted band size: 50KDa. Observed band size: 50KDa.



Immunocytochemistry staining of C6 cells fixed by anhydrous methanol for 2 h at -20°C and using anti-CSK mouse mAb (dilution 1:50).