



MEK Kinase-2 Monoclonal Antibody

Catalog No	BYab-14171
Isotype	IgG
Reactivity	Human
Applications	WB;IF;ELISA
Gene Name	MAP3K2
Protein Name	Mitogen-activated protein kinase kinase kinase 2
Immunogen	Purified recombinant fragment of human MEK Kinase-2 expressed in E. Coli.
Specificity	MEK Kinase-2 Monoclonal Antibody detects endogenous levels of MEK Kinase-2 protein.
Formulation	Ascitic fluid containing 0.03% sodium azide,0.5% BSA, 50%glycerol.
Source	Monoclonal, Mouse
Purification	Affinity purification
Dilution	Western Blot: 1/500 - 1/2000. Immunofluorescence: 1/200 - 1/1000. ELISA: 1/10000. Not yet tested in other applications.
Concentration	1 mg/ml
Purity	≥90%
Storage Stability	-20°C/1 year
Synonyms	MAP3K2; MAPKKK2; MEKK2; Mitogen-activated protein kinase kinase kinase 2; MAPK/ERK kinase kinase 2; MEK kinase 2; MEKK 2
Observed Band	
Cell Pathway	Cytoplasm . Nucleus . Upon EGF stimulation, translocates into the nucleus.
Tissue Specificity	Brain,Platelet,T-cell,Teratocarcinoma,Whole embryo,
Function	catalytic activity:ATP + a protein = ADP + a phosphoprotein.,cofactor:Magnesium.,enzyme regulation:Activated by phosphorylation on Thr-524.,function:Component of a protein kinase signal transduction cascade. Regulates the JNK and ERK5 pathways by phosphorylating and activating MAP2K5 and MAP2K7 (By similarity). Plays a role in caveolae kiss-and-run dynamics.,PTM:Autophosphorylated.,similarity:Belongs to the protein kinase superfamily. STE Ser/Thr protein kinase family. MAP kinase kinase kinase subfamily.,similarity:Contains 1 OPR domain.,similarity:Contains 1 protein kinase domain.,subcellular location:Upon EGF stimulation, translocates into the nucleus.,subunit:Binds both upstream activators and downstream substrates in multimolecular complexes.,

Nanjing BYabscience technology Co.,Ltd



Background

The protein encoded by this gene is a member of serine/threonine protein kinase family. This kinase preferentially activates other kinases involved in the MAP kinase signaling pathway. This kinase has been shown to directly phosphorylate and activate Ikappa B kinases, and thus plays a role in NF-kappa B signaling pathway. This kinase has also been found to bind and activate protein kinase C-related kinase 2, which suggests its involvement in a regulated signaling process. [provided by RefSeq, Jul 2008],

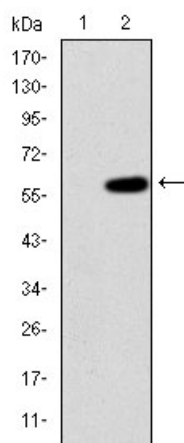
matters needing attention

Avoid repeated freezing and thawing!

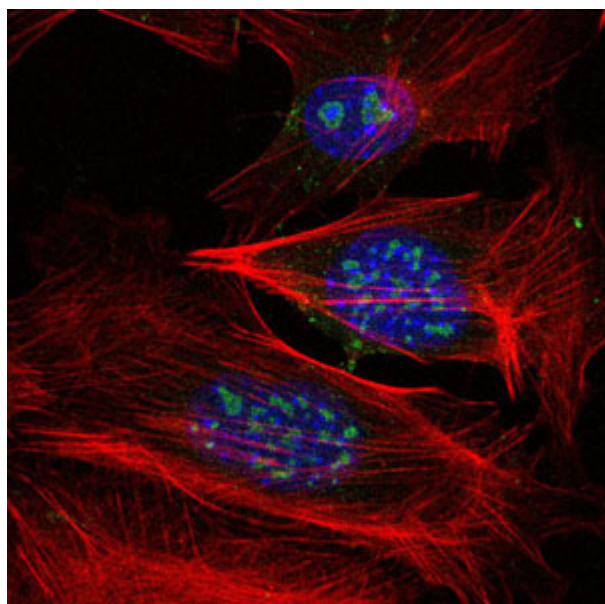
Usage suggestions

This product can be used in immunological reaction related experiments. For more information, please consult technical personnel.

Products Images



Western Blot analysis using MEK Kinase-2 Monoclonal Antibody against HEK293 (1) and MAP3K2-hlgGfc transfected HEK293 (2) cell lysate.



Immunofluorescence analysis of 3T3-L1 cells using MEK Kinase-2 Monoclonal Antibody (green). Blue: DRAQ5 fluorescent DNA dye. Red: Actin filaments have been labeled with Alexa Fluor-555 phalloidin.

Nanjing BYabscience technology Co.,Ltd

网址: www.njbybio.com

官方热线: 025-5229-8998

监督电话: 15950492658

