



GSK3α Monoclonal Antibody

Catalog No	BYab-14152
Isotype	IgG
Reactivity	Human
Applications	WB;IHC;IF;ELISA
Gene Name	GSK3A
Protein Name	Glycogen synthase kinase-3 alpha
Immunogen	Purified recombinant fragment of GSK3α expressed in E. Coli.
Specificity	GSK3α Monoclonal Antibody detects endogenous levels of GSK3α protein.
Formulation	Ascitic fluid containing 0.03% sodium azide,0.5% BSA, 50%glycerol.
Source	Monoclonal, Mouse
Purification	Affinity purification
Dilution	WB: 1/500 - 1/2000. IHC: 1/200 - 1/1000. ELISA: 1/10000.. IF 1:50-200
Concentration	1 mg/ml
Purity	≥90%
Storage Stability	-20°C/1 year
Synonyms	GSK3A; Glycogen synthase kinase-3 alpha; GSK-3 alpha; Serine/threonine-protein kinase GSK3A
Observed Band	
Cell Pathway	mitochondrion,cytosol,beta-catenin destruction complex,postsynapse,
Tissue Specificity	Brain,Eye,Foreskin,Lung,Pancreas,Platelet,Testis,
Function	catalytic activity:ATP + [tau protein] = ADP + [tau protein] phosphate.,function:Implicated in the hormonal control of several regulatory proteins including glycogen synthase, MYB and the transcription factor JUN.,similarity:Belongs to the protein kinase superfamily.,similarity:Belongs to the protein kinase superfamily. CMGC Ser/Thr protein kinase family. GSK-3 subfamily.,similarity:Contains 1 protein kinase domain.,subunit:Monomer.,
Background	glycogen synthase kinase 3 alpha(GSK3A) Homo sapiens This gene encodes a multifunctional Ser/Thr protein kinase that is implicated in the control of several regulatory proteins including glycogen synthase, and transcription factors, such as JUN. It also plays a role in the WNT and PI3K signaling pathways, as well as regulates the production of beta-amyloid peptides associated with

Nanjing BYabscience technology Co.,Ltd



Alzheimer's disease. [provided by RefSeq, Oct 2011],

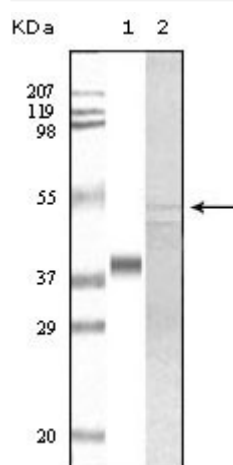
matters needing attention

Avoid repeated freezing and thawing!

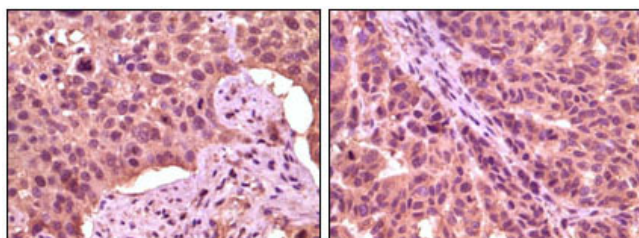
Usage suggestions

This product can be used in immunological reaction related experiments. For more information, please consult technical personnel.

Products Images



Western Blot analysis using GSK3 α Monoclonal Antibody against truncated GSK3 alpha recombinant protein (1) and A549 cell lysate (2).



Immunohistochemistry analysis of paraffin-embedded human lung carcinoma (left) and skin carcinoma (right), showing cytoplasmic localization with DAB staining using GSK3 α Monoclonal Antibody.

Nanjing BYabs science technology Co.,Ltd

网址: www.njbybio.com

官方热线: 025-5229-8998

监督电话: 15950492658