



Csk Monoclonal Antibody

Catalog No	BYab-14131
Isotype	IgG
Reactivity	Human;Mouse;Rat;Monkey
Applications	WB;IF;FCM;ELISA
Gene Name	CSK
Protein Name	Tyrosine-protein kinase CSK
Immunogen	Purified recombinant fragment of human Csk expressed in E. Coli.
Specificity	Csk Monoclonal Antibody detects endogenous levels of Csk protein.
Formulation	Ascitic fluid containing 0.03% sodium azide,0.5% BSA, 50%glycerol.
Source	Monoclonal, Mouse
Purification	Affinity purification
Dilution	Western Blot: 1/500 - 1/2000. Immunofluorescence: 1/200 - 1/1000. Flow cytometry: 1/200 - 1/400. ELISA: 1/10000. Not yet tested in other applications.
Concentration	1 mg/ml
Purity	≥90%
Storage Stability	-20°C/1 year
Synonyms	CSK; Tyrosine-protein kinase CSK; C-Src kinase; Protein-tyrosine kinase CYL
Observed Band	
Cell Pathway	Cytoplasm . Cell membrane . Mainly cytoplasmic, also present in lipid rafts. .
Tissue Specificity	Expressed in lung and macrophages.
Function	catalytic activity:ATP + a [protein]-L-tyrosine = ADP + a [protein]-L-tyrosine phosphate.,function:Specifically phosphorylates 'Tyr-504' on LCK, which acts as a negative regulatory site. Can also act on the LYN and FYN kinases.,PTM:Autophosphorylation of Tyr-304 occurs only at abnormally high CSK concentrations in vitro.,similarity:Belongs to the protein kinase superfamily. Tyr protein kinase family.,similarity:Belongs to the protein kinase superfamily. Tyr protein kinase family. CSK subfamily.,similarity:Contains 1 protein kinase domain.,similarity:Contains 1 SH2 domain.,similarity:Contains 1 SH3 domain.,subcellular location:Mainly cytoplasmic, also present in lipid rafts.,subunit:Interacts with PTPN8 (By similarity). Interacts with phosphorylated SIT1, PAG1, LIME1 and TGFB1I1.,tissue specificity:Expressed in lung and macrophages.,

Nanjing BYabscience technology Co.,Ltd

**Background**

catalytic activity:ATP + a [protein]-L-tyrosine = ADP + a [protein]-L-tyrosine phosphate.,function:Specifically phosphorylates 'Tyr-504' on LCK, which acts as a negative regulatory site. Can also act on the LYN and FYN kinases.,PTM:Autophosphorylation of Tyr-304 occurs only at abnormally high CSK concentrations in vitro.,similarity:Belongs to the protein kinase superfamily. Tyr protein kinase family.,similarity:Belongs to the protein kinase superfamily. Tyr protein kinase family. CSK subfamily.,similarity:Contains 1 protein kinase domain.,similarity:Contains 1 SH2 domain.,similarity:Contains 1 SH3 domain.,subcellular location:Mainly cytoplasmic, also present in lipid rafts.,subunit:Interacts with PTPN8 (By similarity). Interacts with phosphorylated SIT1, PAG1, LIME1 and TGFB111.,tissue specificity:Expressed in lung and macrophages.,

matters needing attention

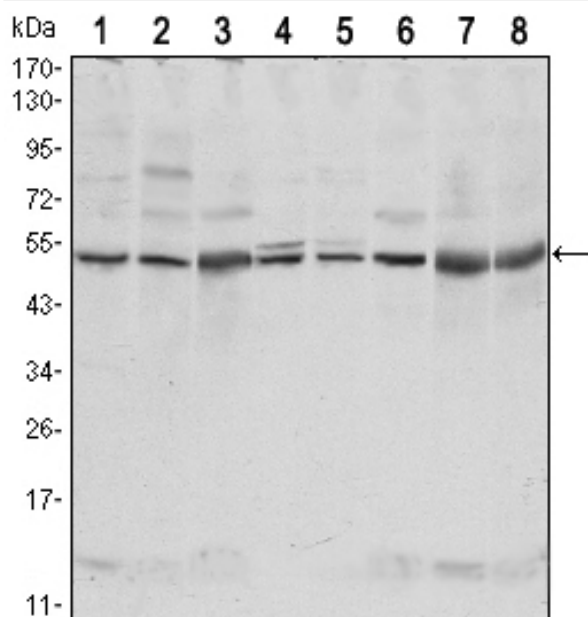
Avoid repeated freezing and thawing!

Usage suggestions

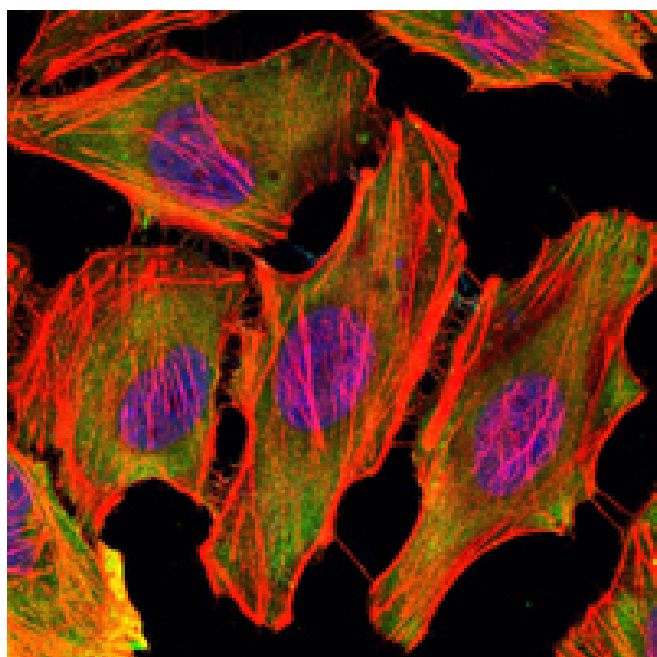
This product can be used in immunological reaction related experiments. For more information, please consult technical personnel.



Products Images



Western Blot analysis using Csk Monoclonal Antibody against NIH/3T3 (1), HeLa (2), COS7 (3), Jurkat (4), Raw246.7 (5), A549 (6), HL-60 (7) and PC-12 (8) cell lysate.



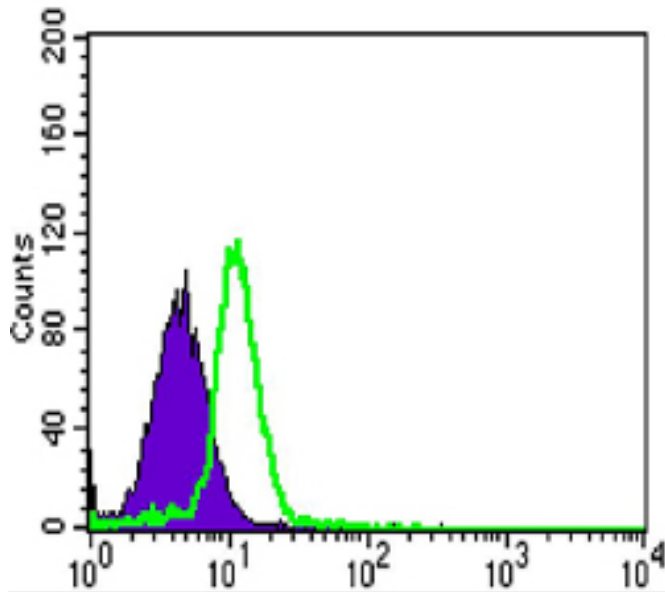
Immunofluorescence analysis of U251 cells using Csk Monoclonal Antibody (green). Blue: DRAQ5 fluorescent DNA dye. Red: Actin filaments have been labeled with Alexa Fluor-555 phalloidin

Nanjing BYabs science technology Co., Ltd

网址: www.njbybio.com

官方热线: 025-5229-8998

监督电话: 15950492658



Flow cytometric analysis of HL-60 cells using Csk Monoclonal Antibody (green) and negative control (purple).