



LAT (Phospho Tyr255) rabbit pAb

Catalog No	BYab-13865
Isotype	IgG
Reactivity	Human;Mouse;Rat
Applications	WB;ELISA;IHC
Gene Name	LAT
Protein Name	LAT (Phospho Tyr255)
Immunogen	Synthesized peptide derived from human LAT (Phospho Tyr255)
Specificity	This antibody detects endogenous levels of Human,Mouse,Rat LAT (Phospho Tyr255)
Formulation	Liquid in PBS containing 50% glycerol, 0.5% BSA and 0.02% sodium azide.
Source	Polyclonal, Rabbit,IgG
Purification	The antibody was affinity-purified from rabbit serum by affinity-chromatography using specific immunogen.
Dilution	WB 1:500-2000;IHC-p 1:50-300; ELISA 2000-20000
Concentration	1 mg/ml
Purity	≥90%
Storage Stability	-20°C/1 year
Synonyms	Linker for activation of T-cells family member 1 (36 kDa phospho-tyrosine adapter protein;pp36;p36-38)
Observed Band	38kD
Cell Pathway	Cell membrane ; Single-pass type III membrane protein . Present in lipid rafts.
Tissue Specificity	Expressed in thymus, T-cells, NK cells, mast cells and, at lower levels, in spleen. Present in T-cells but not B-cells (at protein level).
Function	cell activation, immune effector process, cell activation during immune response, myeloid leukocyte activation, myeloid cell activation during immune response, leukocyte activation during immune response, leukocyte mediated immunity,myeloid leukocyte mediated immunity, mast cell mediated immunity, regulation of leukocyte activation, exocytosis,immune response, cell surface receptor linked signal transduction, integrin-mediated signaling pathway, intracellular signaling cascade, small GTPase mediated signal transduction, Ras protein signal transduction, vesicle-mediated transport, calcium-mediated signaling, second-messenger-mediated signaling, secretion by cell, leukocyte degranulation, mast cell degranulation, regulated secretory pathway, leukocyte activation, mast cell

Nanjing BYabscience technology Co.,Ltd



activation,secretion, regulation of T cell activation, regulation of cell activation, regulation of lymphocyte activation

Background

function:Required for TCR (T-cell antigen receptor)- and pre-TCR-mediated signaling, both in mature T-cells and during their development. Involved in FCGR3 (low affinity immunoglobulin gamma Fc region receptor III)-mediated signaling in natural killer cells and FCER1 (high affinity immunoglobulin epsilon receptor)-mediated signaling in mast cells. Couples activation of these receptors and their associated kinases with distal intracellular events such as mobilization of intracellular calcium stores, PKC activation, MAPK activation or cytoskeletal reorganization through the recruitment of PLCG1, GRB2, GRAP2, and other signaling molecules.,miscellaneous:Engagement of killer inhibitory receptors (KIR) disrupts the interaction of PLCG1 with LAT and blocks target cell-induced activation of PLC, maybe by inducing the dephosphorylation of LAT.,PTM:Palmitoylation of Cys-26 and Cys-29 is required for raft targeting and efficient phosphorylation.,PTM:Phosphorylated on tyrosines by ZAP-70 upon TCR activation, or by SYK upon other immunoreceptor activation; which leads to the recruitment of multiple signaling molecules. Is one of the most prominently tyrosine-phosphorylated proteins detected following TCR engagement.,subcellular location:Present in lipid rafts.,subunit:When phosphorylated, interacts directly with the PIK3R1 subunit of phosphoinositide 3-kinase and the SH2 domains of GRB2, GRAP, GRAP2, PLCG1 and PLCG2. Interacts indirectly with CBL, SOS, VAV, and LCP2. Interacts with SHB, SKAP2 and CLNK (By similarity). Interacts with FCGR1A.,tissue specificity:Expressed in thymus, T-cells, NK cells, mast cells and, at lower levels, in spleen. Present in T-cells but not B-cells (at protein level).,

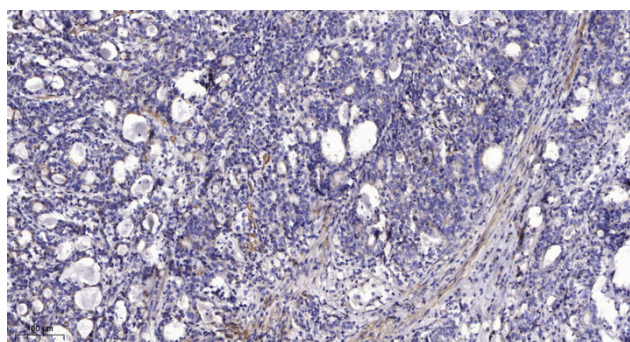
matters needing attention

Avoid repeated freezing and thawing!

Usage suggestions

This product can be used in immunological reaction related experiments. For more information, please consult technical personnel.

Products Images



Immunohistochemical analysis of paraffin-embedded human Gastric adenocarcinoma. 1, Antibody was diluted at 1:200(4° overnight). 2, Tris-EDTA,pH9.0 was used for antigen retrieval. 3,Secondary antibody was diluted at 1:200(room temperature, 45min).