



Kif 7 Monoclonal Antibody(3F8)

Catalog No	BYab-13830
Isotype	IgG
Reactivity	Human;Mouse;Rat
Applications	IHC;IF
Gene Name	KIF7
Protein Name	Kinesin-like protein KIF7
Immunogen	Synthetic Peptide of Kif 7
Specificity	The antibody detects endogenous Kif 7 proteins.
Formulation	PBS, pH 7.4, containing 0.5%BSA, 0.02% sodium azide as Preservative and 50% Glycerol.
Source	Monoclonal, Mouse
Purification	The antibody was affinity-purified from mouse ascites by affinity-chromatography using specific immunogen.
Dilution	WB 500-2000 1:200 IF 1:50-200
Concentration	1 mg/ml
Purity	≥90%
Storage Stability	-20°C/1 year
Synonyms	Kinesin-like protein KIF7
Observed Band	
Cell Pathway	Cell projection, cilium . Cytoplasm, cytoskeleton, cilium basal body . Localizes to the cilium tip.
Tissue Specificity	Embryonic stem cells, melanotic melanoma and Jurkat T-cells. Expressed in heart, lung, liver, kidney, testis, retina, placenta, pancreas, colon, small intestine, prostate and thymus.
Function	similarity:Belongs to the kinesin-like protein family. KIF27 subfamily.,similarity:Contains 1 kinesin-motor domain.,tissue specificity:Embryonic stem cells, melanotic melanoma and Jurkat T-cells.,
Background	This gene encodes a cilia-associated protein belonging to the kinesin family. This protein plays a role in the sonic hedgehog (SHH) signaling pathway through the regulation of GLI transcription factors. It functions as a negative regulator of the SHH pathway by preventing inappropriate activation of GLI2 in the absence of ligand, and as a positive regulator by preventing the processing of GLI3 into its repressor form. Mutations in this gene have been associated with various

Nanjing BYabscience technology Co.,Ltd



ciliopathies. [provided by RefSeq, Oct 2011],

**matters needing
attention**

Avoid repeated freezing and thawing!

Usage suggestions

This product can be used in immunological reaction related experiments. For more information, please consult technical personnel.

Nanjing BYabscience technology Co.,Ltd

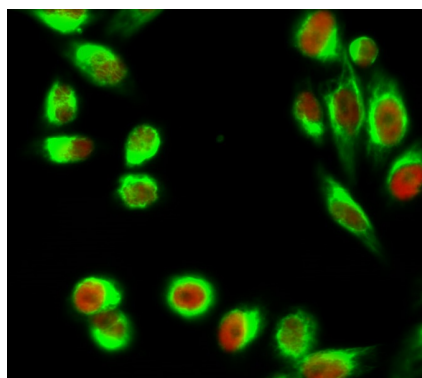
网址: www.njbybio.com

官方热线: 025-5229-8998

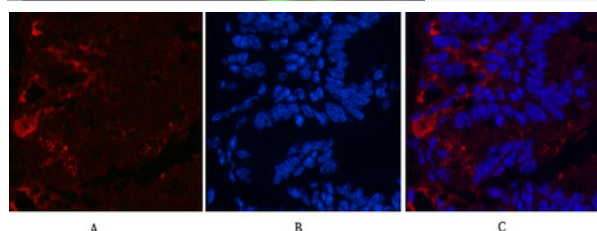
监督电话: 15950492658



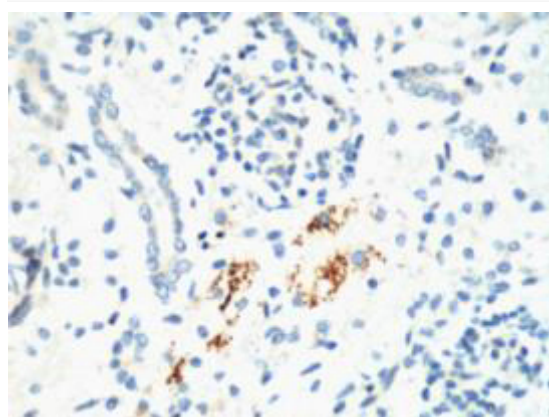
Products Images



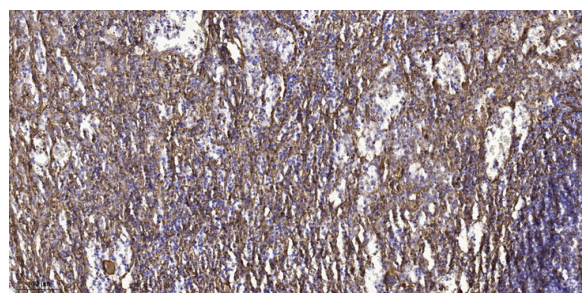
Immunofluorescence analysis of Hela cell. 1, C/EBP β Polyclonal Antibody (red) was diluted at 1:200 (4° overnight). Kif 7 Monoclonal Antibody (3F8) (green) was diluted at 1:200 (4° overnight). 2, Goat Anti Rabbit Alexa Fluor 594 Catalog: RS3611 was diluted at 1:1000 (room temperature, 50min). Goat Anti Mouse Alexa Fluor 488 Catalog: RS3208 was diluted at 1:1000 (room temperature, 50min).



Immunofluorescence analysis of Mouse-colon tissue. 1, Kif 7 Monoclonal Antibody (3F8) (red) was diluted at 1:200 (4°C, overnight). 2, Cy3 labeled Secondary antibody was diluted at 1:300 (room temperature, 50min). 3, Picture B: DAPI (blue) 10min. Picture A: Target. Picture B: DAPI. Picture C: merge of A+B



IHC staining of Mouse Kidney tissue, diluted at 1:200.



Immunohistochemical analysis of paraffin-embedded human spleen tissue. 1, primary Antibody was diluted at 1:200 (4° overnight). 2, Sodium citrate pH 6.0 was used for antigen retrieval (>98°C, 20min). 3, Secondary antibody was diluted at 1:200