



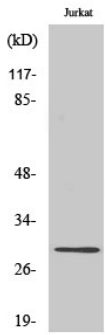
LDLRAD2 Polyclonal Antibody

Catalog No	BYab-13391
Isotype	IgG
Reactivity	Human;Rat;Mouse;
Applications	WB;ELISA;IHC
Gene Name	LDLRAD2
Protein Name	Low-density lipoprotein receptor class A domain-containing protein 2
Immunogen	The antiserum was produced against synthesized peptide derived from human LDLRAD2. AA range:130-179
Specificity	LDLRAD2 Polyclonal Antibody detects endogenous levels of LDLRAD2 protein.
Formulation	Liquid in PBS containing 50% glycerol, 0.5% BSA and 0.02% sodium azide.
Source	Polyclonal, Rabbit,IgG
Purification	The antibody was affinity-purified from rabbit antiserum by affinity-chromatography using epitope-specific immunogen.
Dilution	WB 1:500-2000;IHC-p 1:50-300; ELISA 2000-20000
Concentration	1 mg/ml
Purity	≥90%
Storage Stability	-20°C/1 year
Synonyms	LDLRAD2; Low-density lipoprotein receptor class A domain-containing protein 2
Observed Band	29kD
Cell Pathway	Membrane; Single-pass type I membrane protein.
Tissue Specificity	Hippocampus,
Function	similarity:Belongs to the LDLR family.,similarity:Contains 1 LDL-receptor class A domain.,
Background	similarity:Belongs to the LDLR family.,similarity:Contains 1 LDL-receptor class A domain.,
matters needing attention	Avoid repeated freezing and thawing!
Usage suggestions	This product can be used in immunological reaction related experiments. For more information, please consult technical personnel.

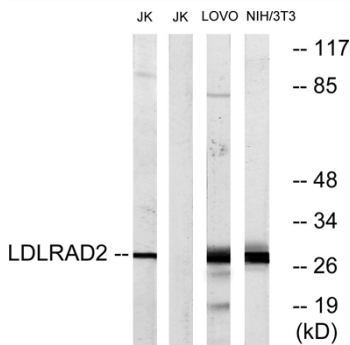
Nanjing BYabscience technology Co.,Ltd



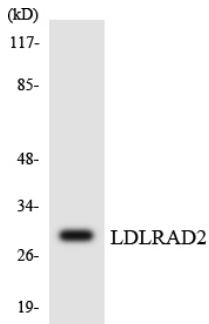
Products Images



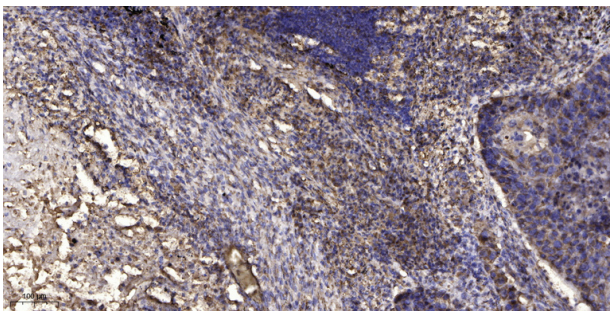
Western Blot analysis of various cells using LDLRAD2 Polyclonal Antibody diluted at 1:500



Western blot analysis of lysates from Jurkat, LOVO, and NIH/3T3 cells, using LDLRAD2 Antibody. The lane on the right is blocked with the synthesized peptide.



Western blot analysis of the lysates from HepG2 cells using LDLRAD2 antibody.



Immunohistochemical analysis of paraffin-embedded human Squamous cell carcinoma of lung. 1, Antibody was diluted at 1:200(4° overnight). 2, Tris-EDTA,pH9.0 was used for antigen retrieval. 3,Secondary antibody was diluted at 1:200(room temperature, 45min).