



# GPR123 Polyclonal Antibody

<b>Catalog No</b>	BYab-13293
<b>Isotype</b>	IgG
<b>Reactivity</b>	Human;Rat;Mouse;
<b>Applications</b>	IF;ELISA
<b>Gene Name</b>	GPR123
<b>Protein Name</b>	Probable G-protein coupled receptor 123
<b>Immunogen</b>	The antiserum was produced against synthesized peptide derived from human GPR123. AA range:201-250
<b>Specificity</b>	GPR123 Polyclonal Antibody detects endogenous levels of GPR123 protein.
<b>Formulation</b>	Liquid in PBS containing 50% glycerol, 0.5% BSA and 0.02% sodium azide.
<b>Source</b>	Polyclonal, Rabbit,IgG
<b>Purification</b>	The antibody was affinity-purified from rabbit antiserum by affinity-chromatography using epitope-specific immunogen.
<b>Dilution</b>	Immunofluorescence: 1/200 - 1/1000. ELISA: 1/5000. Not yet tested in other applications.
<b>Concentration</b>	1 mg/ml
<b>Purity</b>	≥90%
<b>Storage Stability</b>	-20°C/1 year
<b>Synonyms</b>	GPR123; KIAA1828; Probable G-protein coupled receptor 123
<b>Observed Band</b>	
<b>Cell Pathway</b>	Membrane ; Multi-pass membrane protein .
<b>Tissue Specificity</b>	Brain,
<b>Function</b>	function:Orphan receptor.,similarity:Belongs to the G-protein coupled receptor 2 family. LN-TM7 subfamily.,
<b>Background</b>	This gene encodes a protein that belongs to the adhesion family of G-protein-coupled receptors. Members of this family function in several sensory systems and regulate blood pressure, immune responses, food intake and development. A similar protein in rodents is thought to play a role in in the regulation of neuronal signaling pathways. Several alternatively spliced transcript variants of this gene have been described, but the full-length nature of some of these variants has not been determined. [provided by RefSeq, Mar 2014],

**Nanjing BYabscience technology Co.,Ltd**



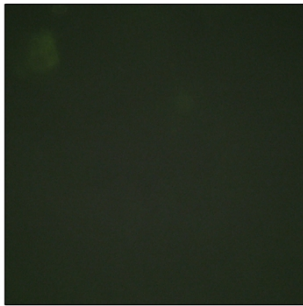
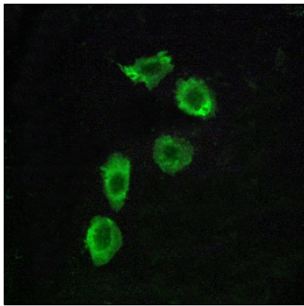
**matters needing attention**

Avoid repeated freezing and thawing!

**Usage suggestions**

This product can be used in immunological reaction related experiments. For more information, please consult technical personnel.

## Products Images



Immunofluorescence analysis of HUVEC cells, using GPR123 Antibody. The picture on the right is blocked with the synthesized peptide.