



DREG Polyclonal Antibody

Catalog No	BYab-13199
Isotype	IgG
Reactivity	Human;Mouse
Applications	WB;IF;ELISA
Gene Name	GPR126
Protein Name	G-protein coupled receptor 126
Immunogen	The antiserum was produced against synthesized peptide derived from human GPR126. AA range:1091-1140
Specificity	DREG Polyclonal Antibody detects endogenous levels of DREG protein.
Formulation	Liquid in PBS containing 50% glycerol, 0.5% BSA and 0.02% sodium azide.
Source	Polyclonal, Rabbit,IgG
Purification	The antibody was affinity-purified from rabbit antiserum by affinity-chromatography using epitope-specific immunogen.
Dilution	Western Blot: 1/500 - 1/2000. Immunofluorescence: 1/200 - 1/1000. ELISA: 1/20000. Not yet tested in other applications.
Concentration	1 mg/ml
Purity	≥90%
Storage Stability	-20°C/1 year
Synonyms	GPR126; DREG; VIGR; G-protein coupled receptor 126; Developmentally regulated G-protein-coupled receptor; Vascular inducible G protein-coupled receptor
Observed Band	140kD
Cell Pathway	Cell membrane ; Multi-pass membrane protein . Detected on the cell surface of activated but not resting umbilical vein. .
Tissue Specificity	Expressed in placenta and to a lower extent in pancreas and liver. Detected in aortic endothelial cells but not in skin microvascular endothelial cells.
Function	function:Orphan receptor.,polymorphism:Genetic variations in GPR126 influences stature as a quantitative trait (STQTL) [MIM:606255]. Adult height is an easily observable and highly heritable complex continuous trait. Because of this, it is a model trait for studying genetic influence on quantitative traits.,similarity:Belongs to the G-protein coupled receptor 2 family. LN-TM7 subfamily.,similarity:Contains 1 CUB domain.,similarity:Contains 1 GPS domain.,similarity:Contains 1 pentaxin domain.,

Nanjing BYabscience technology Co.,Ltd



Background

This gene, which is upregulated in human umbilical vein endothelial cells, encodes a G protein-coupled receptor. Variations in this gene can affect a person's stature. Multiple transcript variants encoding different proteins have been found for this gene. [provided by RefSeq, Mar 2009],

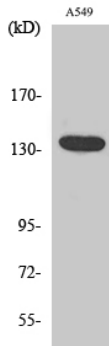
matters needing attention

Avoid repeated freezing and thawing!

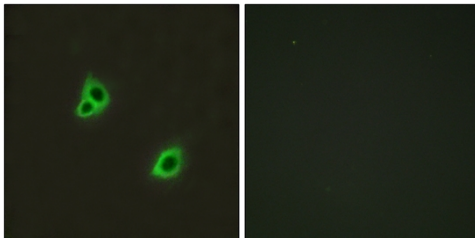
Usage suggestions

This product can be used in immunological reaction related experiments. For more information, please consult technical personnel.

Products Images



Western Blot analysis of various cells using DREG Polyclonal Antibody



Immunofluorescence analysis of HUVEC cells, using GPR126 Antibody. The picture on the right is blocked with the synthesized peptide.