



EphA2 (phospho-Tyr772) rabbit pAb

Catalog No	BYab-13102
Isotype	IgG
Reactivity	Human;Rat;Mouse;
Applications	WB
Gene Name	EPHA2 ECK
Protein Name	EphA2 (Tyr772)
Immunogen	Synthesized phosho peptide around human EphA2 (Tyr772)
Specificity	This antibody detects endogenous levels of Human EphA2 (phospho-Tyr772)
Formulation	Liquid in PBS containing 50% glycerol, 0.5% BSA and 0.02% sodium azide.
Source	Polyclonal, Rabbit,IgG
Purification	The antibody was affinity-purified from rabbit serum by affinity-chromatography using specific immunogen.
Dilution	WB 1:1000-2000
Concentration	1 mg/ml
Purity	≥90%
Storage Stability	-20°C/1 year
Synonyms	Ephrin type-A receptor 2 (EC 2.7.10.1) (Epithelial cell kinase) (Tyrosine-protein kinase receptor ECK)
Observed Band	105kD
Cell Pathway	Cell membrane ; Single-pass type I membrane protein . Cell projection, ruffle membrane ; Single-pass type I membrane protein . Cell projection, lamellipodium membrane ; Single-pass type I membrane protein . Cell junction, focal adhesion . Present at regions of cell-cell contacts but also at the leading edge of migrating cells (PubMed:19573808, PubMed:20861311). Relocates from the plasma membrane to the cytoplasmic and perinuclear regions in cancer cells (PubMed:18794797). .
Tissue Specificity	Expressed in brain and glioma tissue and glioma cell lines (at protein level). Expressed most highly in tissues that contain a high proportion of epithelial cells, e.g. skin, intestine, lung, and ovary.
Function	catalytic activity:ATP + a [protein]-L-tyrosine = ADP + a [protein]-L-tyrosine phosphate.;function:Receptor for members of the ephrin-A family. Binds to ephrin-A1, -A3, -A4 and -A5.;similarity:Belongs to the protein kinase superfamily. Tyr protein kinase family. Ephrin receptor subfamily.;similarity:Contains 1 protein kinase domain.;similarity:Contains 1 SAM (sterile alpha motif)

Nanjing BYabscience technology Co.,Ltd



domain.,similarity:Contains 2 fibronectin type-III domains.,subunit:Interacts with SLA (By similarity). Interacts with INPPL1/SHIP2.,tissue specificity:Expressed most highly in tissues that contain a high proportion of epithelial cells, e.g., skin, intestine, lung, and ovary.,

Background

This gene belongs to the ephrin receptor subfamily of the protein-tyrosine kinase family. EPH and EPH-related receptors have been implicated in mediating developmental events, particularly in the nervous system. Receptors in the EPH subfamily typically have a single kinase domain and an extracellular region containing a Cys-rich domain and 2 fibronectin type III repeats. The ephrin receptors are divided into 2 groups based on the similarity of their extracellular domain sequences and their affinities for binding ephrin-A and ephrin-B ligands. This gene encodes a protein that binds ephrin-A ligands. Mutations in this gene are the cause of certain genetically-related cataract disorders.[provided by RefSeq, May 2010],

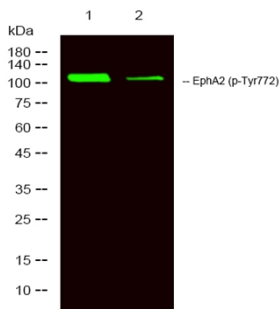
matters needing attention

Avoid repeated freezing and thawing!

Usage suggestions

This product can be used in immunological reaction related experiments. For more information, please consult technical personnel.

Products Images



Western Blot analysis of 1 HeLa, 2 treated with LPS 100ng/mL 20min,using primary antibody at 1:1000 dilution. Secondary antibody(catalog#:RS23920) was diluted at 1:10000