



# ROR1 Monoclonal Antibody

|                           |   |
|---------------------------|---|
| <b>Catalog No</b>         | BYab-12941  |
| <b>Isotype</b>            | IgG   |
| <b>Reactivity</b>         | Human   |
| <b>Applications</b>       | WB;IF;ELISA   |
| <b>Gene Name</b>          | ROR1  |
| <b>Protein Name</b>       | Tyrosine-protein kinase transmembrane receptor ROR1   |
| <b>Immunogen</b>          | Recombinant extracellular fragment of human ROR1 (aa30-406) fused with hlgGfc tag, expressed in HEK293 cells  |
| <b>Specificity</b>        | ROR1 Monoclonal Antibody detects endogenous levels of ROR1 protein.   |
| <b>Formulation</b>        | Ascitic fluid containing 0.03% sodium azide,0.5% BSA, 50%glycerol.  |
| <b>Source</b>             | Monoclonal, Mouse   |
| <b>Purification</b>       | Affinity purification   |
| <b>Dilution</b>           | Western Blot: 1/500 - 1/2000. Immunofluorescence: 1/200 - 1/1000. ELISA: 1/10000. Not yet tested in other applications.   |
| <b>Concentration</b>      | 1 mg/ml   |
| <b>Purity</b>             | ≥90%  |
| <b>Storage Stability</b>  | -20°C/1 year  |
| <b>Synonyms</b>           | ROR1; NTRKR1; Tyrosine-protein kinase transmembrane receptor ROR1; Neurotrophic tyrosine kinase; receptor-related 1   |
| <b>Observed Band</b>      |   |
| <b>Cell Pathway</b>       | Membrane ; Single-pass type I membrane protein. Cell projection, axon .   |
| <b>Tissue Specificity</b> | Expressed strongly in human heart, lung and kidney, but weakly in the CNS. Isoform Short is strongly expressed in fetal and adult CNS and in a variety of human cancers, including those originating from CNS or PNS neuroectoderm.   |
| <b>Function</b>           | catalytic activity:ATP + a [protein]-L-tyrosine = ADP + a [protein]-L-tyrosine phosphate.,developmental stage:Expressed at high levels during early embryonic development. The expression levels drop strongly around day 16 and there are only very low levels in adult tissues.,function:Tyrosine-protein kinase receptor whose role is not yet clear.,similarity:Belongs to the protein kinase superfamily. Tyr protein kinase family. ROR subfamily.,similarity:Contains 1 FZ (frizzled) domain.,similarity:Contains 1 Ig-like C2-type (immunoglobulin-like) domain.,similarity:Contains 1 kringle domain.,similarity:Contains 1 protein kinase domain.,tissue specificity:Expressed strongly in human heart, lung, and kidney, but weakly in the CNS. The short isoform is strongly expressed in fetal and adult |

**Nanjing BYabs science technology Co.,Ltd**



CNS and in a variety of human cancers, including those originating from CNS or PNS neuroectoderm.,

## Background

This gene encodes a receptor tyrosine kinase-like orphan receptor that modulates neurite growth in the central nervous system. The encoded protein is a glycosylated type I membrane protein that belongs to the ROR subfamily of cell surface receptors. It is a pseudokinase that lacks catalytic activity and may interact with the non-canonical Wnt signalling pathway. This gene is highly expressed during early embryonic development but expressed at very low levels in adult tissues. Increased expression of this gene is associated with B-cell chronic lymphocytic leukaemia. Alternative splicing results in multiple transcript variants encoding different isoforms. [provided by RefSeq, Jun 2012],

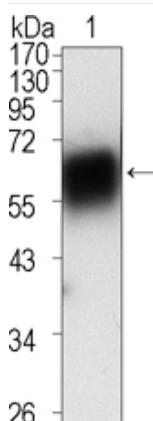
## matters needing attention

Avoid repeated freezing and thawing!

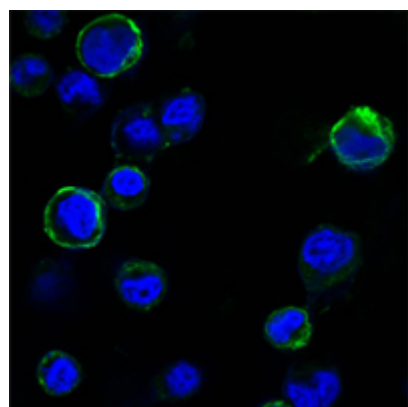
## Usage suggestions

This product can be used in immunological reaction related experiments. For more information, please consult technical personnel.

## Products Images



Western Blot analysis using ROR1 Monoclonal Antibody against extracellular domain of human ROR1 (aa30-423).



Confocal immunofluorescence analysis of HEK293 cells trasfected with extracellular ROR1 (aa30-406)-hlgGfc using ROR1 Monoclonal Antibody (green). Blue: DRAQ5 fluorescent DNA dye.

**Nanjing BYabs science technology Co.,Ltd**

网址: [www.njbybio.com](http://www.njbybio.com)

官方热线: 025-5229-8998

监督电话: 15950492658