



# EphA7 Monoclonal Antibody

<b>Catalog No</b>	BYab-12911
<b>Isotype</b>	IgG
<b>Reactivity</b>	Human
<b>Applications</b>	WB;IHC;IF;ELISA
<b>Gene Name</b>	EPHA7
<b>Protein Name</b>	Ephrin type-A receptor 7
<b>Immunogen</b>	Purified recombinant fragment of EphA7 (aa27-210) expressed in E. Coli.
<b>Specificity</b>	EphA7 Monoclonal Antibody detects endogenous levels of EphA7 protein.
<b>Formulation</b>	Ascitic fluid containing 0.03% sodium azide,0.5% BSA, 50%glycerol.
<b>Source</b>	Monoclonal, Mouse
<b>Purification</b>	Affinity purification
<b>Dilution</b>	WB: 1/500 - 1/2000. IHC: 1/200 - 1/1000. ELISA: 1/10000.. IF 1:50-200
<b>Concentration</b>	1 mg/ml
<b>Purity</b>	≥90%
<b>Storage Stability</b>	-20°C/1 year
<b>Synonyms</b>	EPHA7; EHK3; HEK11; Ephrin type-A receptor 7; EPH homology kinase 3; EHK-3; EPH-like kinase 11; EK11; hEK11
<b>Observed Band</b>	
<b>Cell Pathway</b>	Cell membrane ; Single-pass type I membrane protein .
<b>Tissue Specificity</b>	Widely expressed.
<b>Function</b>	catalytic activity:ATP + a [protein]-L-tyrosine = ADP + a [protein]-L-tyrosine phosphate.,function:Receptor for members of the ephrin-A family. Binds to ephrin-A1, -A2, -A3, -A4 and -A5.,similarity:Belongs to the protein kinase superfamily. Tyr protein kinase family. Ephrin receptor subfamily.,similarity:Contains 1 protein kinase domain.,similarity:Contains 1 SAM (sterile alpha motif) domain.,similarity:Contains 2 fibronectin type-III domains.,subunit:Interacts with PRKCABP and GRIP1.,tissue specificity:Widely expressed.,
<b>Background</b>	This gene belongs to the ephrin receptor subfamily of the protein-tyrosine kinase family. EPH and EPH-related receptors have been implicated in mediating developmental events, particularly in the nervous system. Receptors in the EPH

**Nanjing BYabscience technology Co.,Ltd**



subfamily typically have a single kinase domain and an extracellular region containing a Cys-rich domain and 2 fibronectin type III repeats. The ephrin receptors are divided into 2 groups based on the similarity of their extracellular domain sequences and their affinities for binding ephrin-A and ephrin-B ligands. Increased expression of this gene is associated with multiple forms of carcinoma. Alternative splicing results in multiple transcript variants. [provided by RefSeq, Dec 2013],

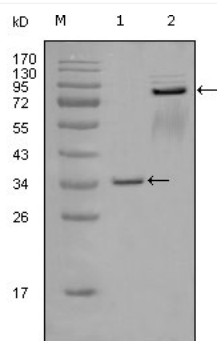
#### matters needing attention

Avoid repeated freezing and thawing!

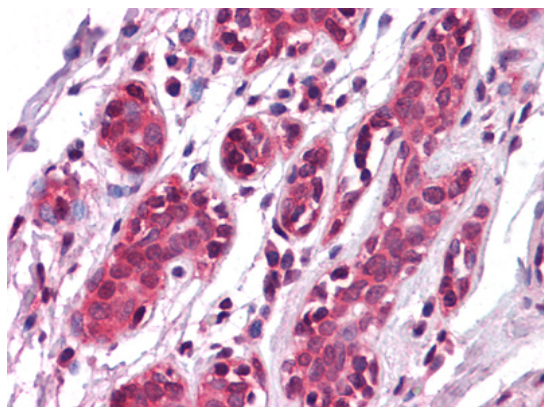
#### Usage suggestions

This product can be used in immunological reaction related experiments. For more information, please consult technical personnel.

## Products Images



Western Blot analysis using EphA7 Monoclonal Antibody against truncated GST-EphA7 recombinant protein (1) and truncated EphA7 (aa25-556)-hIgGFc transfected CHOK1 cell lysate (2).



Immunohistochemistry analysis of paraffin-embedded human Breast tissues with AEC staining using EphA7 Monoclonal Antibody.

Nanjing BYabs science technology Co.,Ltd

网址: [www.njbybio.com](http://www.njbybio.com)

官方热线: 025-5229-8998

监督电话: 15950492658