



EphA4 Monoclonal Antibody

| | |
|---------------------------|--|
| Catalog No | BYab-12908 |
| Isotype | IgG |
| Reactivity | Human |
| Applications | WB;ELISA |
| Gene Name | EPHA4 |
| Protein Name | Ephrin type-A receptor 4 |
| Immunogen | Purified recombinant fragment of EphA4 (aa777-986) expressed in E. Coli. |
| Specificity | EphA4 Monoclonal Antibody detects endogenous levels of EphA4 protein. |
| Formulation | Ascitic fluid containing 0.03% sodium azide,0.5% BSA, 50%glycerol. |
| Source | Monoclonal, Mouse |
| Purification | Affinity purification |
| Dilution | Western Blot: 1/500 - 1/2000. ELISA: 1/10000. Not yet tested in other applications. |
| Concentration | 1 mg/ml |
| Purity | ≥90% |
| Storage Stability | -20°C/1 year |
| Synonyms | EPHA4; HEK8; SEK; TYRO1; Ephrin type-A receptor 4; EPH-like kinase 8; EK8; hEK8; Tyrosine-protein kinase TYRO1; Tyrosine-protein kinase receptor SEK |
| Observed Band | |
| Cell Pathway | Cell membrane ; Single-pass type I membrane protein . Cell projection, axon . Cell projection, dendrite . Cell junction, synapse, postsynaptic density membrane . Early endosome . Cell junction, adherens junction . Clustered upon activation and targeted to early endosome. . |
| Tissue Specificity | Ubiquitous. |
| Function | catalytic activity:ATP + a [protein]-L-tyrosine = ADP + a [protein]-L-tyrosine phosphate.,domain:The protein kinase domain mediates interaction with NGEF/ephexin-1.,function:Receptor for members of the ephrin-A family. Binds to ephrin-A1, -A4 and -A5. Binds more poorly to ephrin-A2 and -A3. May play a role in a signal transduction process involved in hindbrain pattern formation.,similarity:Belongs to the protein kinase superfamily. Tyr protein kinase family.,similarity:Belongs to the protein kinase superfamily. Tyr protein kinase family. Ephrin receptor subfamily.,similarity:Contains 1 protein kinase domain.,similarity:Contains 1 SAM (sterile alpha motif) domain.,similarity:Contains 2 fibronectin type-III domains.,subunit:Interacts with |

Nanjing BYabscience technology Co.,Ltd



the src family kinase, p59-Fyn, through the major phosphorylation site at position Tyr-602. Interacts with NGEF/ephexin-1.,tissue specificity:Ubiquitous.

Background

This gene belongs to the ephrin receptor subfamily of the protein-tyrosine kinase family. EPH and EPH-related receptors have been implicated in mediating developmental events, particularly in the nervous system. Receptors in the EPH subfamily typically have a single kinase domain and an extracellular region containing a Cys-rich domain and 2 fibronectin type III repeats. The ephrin receptors are divided into 2 groups based on the similarity of their extracellular domain sequences and their affinities for binding ephrin-A and ephrin-B ligands. Multiple transcript variants encoding different isoforms have been found for this gene. [provided by RefSeq, Jan 2015],

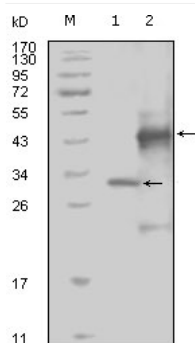
matters needing attention

Avoid repeated freezing and thawing!

Usage suggestions

This product can be used in immunological reaction related experiments. For more information, please consult technical personnel.

Products Images



Western Blot analysis using EphA4 Monoclonal Antibody against truncated Trx-EphA4 recombinant protein (1) and truncated GST-EphA4(aa777-986) recombinant protein (2).