



mAChR M4 Polyclonal Antibody

Catalog No	BYab-12742
Isotype	IgG
Reactivity	Human;Mouse;Rat
Applications	WB;IF;ELISA
Gene Name	CHRM4
Protein Name	Muscarinic acetylcholine receptor M4
Immunogen	The antiserum was produced against synthesized peptide derived from human CHRM4. AA range:236-285
Specificity	mAChR M4 Polyclonal Antibody detects endogenous levels of mAChR M4 protein.
Formulation	Liquid in PBS containing 50% glycerol, 0.5% BSA and 0.02% sodium azide.
Source	Polyclonal, Rabbit,IgG
Purification	The antibody was affinity-purified from rabbit antiserum by affinity-chromatography using epitope-specific immunogen.
Dilution	Western Blot: 1/500 - 1/2000. Immunofluorescence: 1/200 - 1/1000. ELISA: 1/10000. Not yet tested in other applications.
Concentration	1 mg/ml
Purity	≥90%
Storage Stability	-20°C/1 year
Synonyms	CHRM4; Muscarinic acetylcholine receptor M4
Observed Band	53kD
Cell Pathway	Cell membrane; Multi-pass membrane protein. Cell junction, synapse, postsynaptic cell membrane; Multi-pass membrane protein.
Tissue Specificity	Brain,
Function	function:The muscarinic acetylcholine receptor mediates various cellular responses, including inhibition of adenylate cyclase, breakdown of phosphoinositides and modulation of potassium channels through the action of G proteins. Primary transducing effect is inhibition of adenylate cyclase.,similarity:Belongs to the G-protein coupled receptor 1 family.,
Background	The muscarinic cholinergic receptors belong to a larger family of G protein-coupled receptors. The functional diversity of these receptors is defined by the binding of acetylcholine and includes cellular responses such as adenylate cyclase inhibition, phosphoinositide degeneration, and potassium channel mediation. Muscarinic receptors influence many effects of acetylcholine in the

Nanjing BYabscience technology Co.,Ltd



central and peripheral nervous system. The clinical implications of this receptor are unknown; however, mouse studies link its function to adenylyl cyclase inhibition. [provided by RefSeq, Jul 2008],

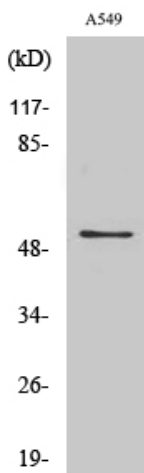
matters needing attention

Avoid repeated freezing and thawing!

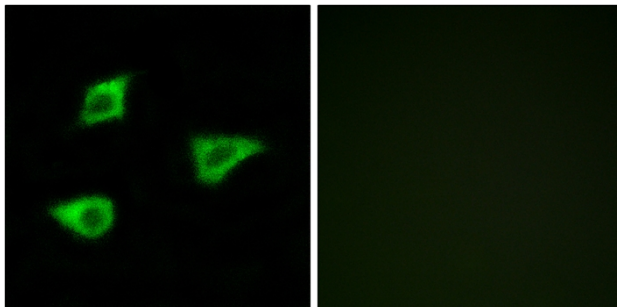
Usage suggestions

This product can be used in immunological reaction related experiments. For more information, please consult technical personnel.

Products Images



Western Blot analysis of various cells using mACHR M4 Polyclonal Antibody



Immunofluorescence analysis of LOVO cells, using CHR4 Antibody. The picture on the right is blocked with the synthesized peptide.