



Cerebellin 3 Polyclonal Antibody

| | |
|---------------------------|--|
| Catalog No | BYab-12700 |
| Isotype | IgG |
| Reactivity | Human;Mouse |
| Applications | IHC;IF;WB;ELISA |
| Gene Name | CBLN3 |
| Protein Name | Cerebellin-3 |
| Immunogen | The antiserum was produced against synthesized peptide derived from human CBLN3. AA range:131-180 |
| Specificity | Cerebellin 3 Polyclonal Antibody detects endogenous levels of Cerebellin 3 protein. |
| Formulation | Liquid in PBS containing 50% glycerol, 0.5% BSA and 0.02% sodium azide. |
| Source | Polyclonal, Rabbit,IgG |
| Purification | The antibody was affinity-purified from rabbit antiserum by affinity-chromatography using epitope-specific immunogen. |
| Dilution | WB 1:500-2000 IHC: 1/100 - 1/300. ELISA: 1/40000.. IF 1:50-200 |
| Concentration | 1 mg/ml |
| Purity | ≥90% |
| Storage Stability | -20°C/1 year |
| Synonyms | CBLN3; Cerebellin-3 |
| Observed Band | 27kD |
| Cell Pathway | Endoplasmic reticulum . Golgi apparatus, cis-Golgi network . Secreted . Cell junction, synapse . In the absence of CBLN1, remains in the endoplasmic reticulum/cis-Golgi apparatus. Partial secretion depends on an association with CBLN1 and maybe CBLN4, but not on CBLN2 (By similarity) . |
| Tissue Specificity | |
| Function | function:May be involved in synaptic functions in the CNS.,similarity:Contains 1 C1q domain.,subcellular location:Secretion depends probably on a association with CBLN1 or perhaps CBLN4 but not on CBLN2.,subunit:Heterohexamer; disulfide-linked heterotrimers. Does not homooligomerize, but probably forms a complex with at least CBLN1. May interact with CBLN2 and CBLN4., |
| Background | Members of the precerebellin family, such as CBLN3, contain a cerebellin motif (see CBLN1; MIM 600432) and a C-terminal C1q signature domain (see MIM 120550) that mediates trimeric assembly of atypical collagen complexes. |

Nanjing BYabscience technology Co.,Ltd



However, precerebellins do not contain a collagen motif, suggesting that they are not conventional components of the extracellular matrix (Pang et al., 2000 [PubMed 10964938]).[supplied by OMIM, Aug 2009],

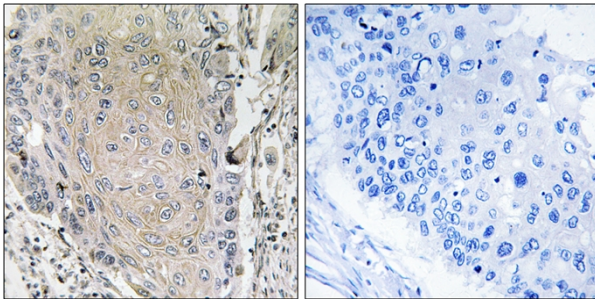
matters needing attention

Avoid repeated freezing and thawing!

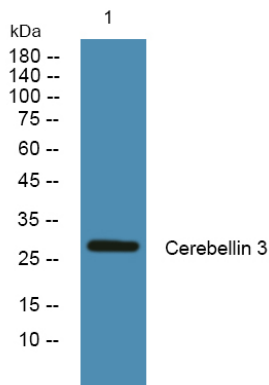
Usage suggestions

This product can be used in immunological reaction related experiments. For more information, please consult technical personnel.

Products Images



Immunohistochemistry analysis of paraffin-embedded human lung carcinoma tissue, using CBLN3 Antibody. The picture on the right is blocked with the synthesized peptide.



Western blot analysis of lysates from K562 cells, primary antibody was diluted at 1:1000, 4° over night