



STXB2 rabbit pAb

Catalog No	BYab-12387
Isotype	IgG
Reactivity	Human; Mouse;Rat
Applications	WB;ELISA;IHC
Gene Name	STXBP2 UNC18B
Protein Name	STXB2
Immunogen	Synthesized peptide derived from human STXB2 AA range: 392-442
Specificity	This antibody detects endogenous levels of STXB2 at Human/Mouse/Rat
Formulation	Liquid in PBS containing 50% glycerol, 0.5% BSA and 0.02% sodium azide.
Source	Polyclonal, Rabbit,IgG
Purification	The antibody was affinity-purified from rabbit serum by affinity-chromatography using specific immunogen.
Dilution	WB 1:500-2000;IHC-p 1:50-300; ELISA 2000-20000
Concentration	1 mg/ml
Purity	≥90%
Storage Stability	-20°C/1 year
Synonyms	
Observed Band	
Cell Pathway	cytosol,plasma membrane,integral component of membrane,apical plasma membrane,SNARE complex,specific granule,azurophil granule,zymogen granule membrane,cytolytic granule,extracellular exosome,tertiary granule,
Tissue Specificity	Placenta, lung, liver, kidney and pancreas, as well as in peripheral blood lymphocytes.
Function	function:Involved in the protein trafficking from the Golgi apparatus to the plasma membrane.,similarity:Belongs to the STXBP/unc-18/SEC1 family.,subunit:Binds syntaxins 1A, 2, 3 but not 4.,tissue specificity:Placenta, lung, liver, kidney and pancreas, as well as in peripheral blood lymphocytes.,
Background	This gene encodes a member of the STXBP/unc-18/SEC1 family. The encoded protein is involved in intracellular trafficking, control of SNARE (soluble NSF attachment protein receptor) complex assembly, and the release of cytotoxic granules by natural killer cells. Mutations in this gene are associated with familial hemophagocytic lymphohistiocytosis. Alternatively spliced transcript variants encoding different isoforms have been noted for this gene. [provided by RefSeq,

Nanjing BYabscience technology Co.,Ltd



Jan 2013],

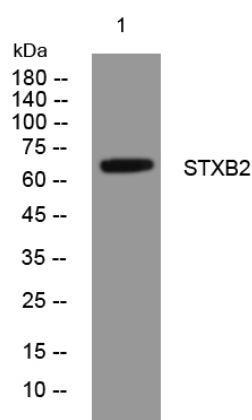
matters needing attention

Avoid repeated freezing and thawing!

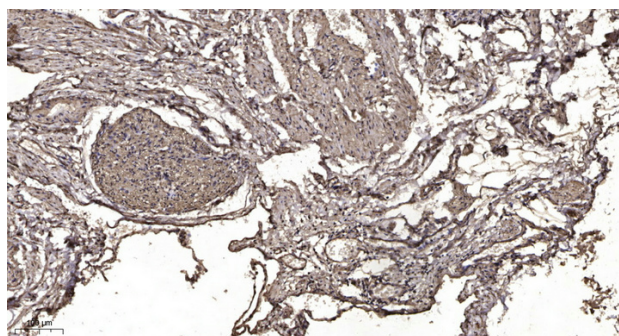
Usage suggestions

This product can be used in immunological reaction related experiments. For more information, please consult technical personnel.

Products Images



Western blot analysis of lysates from AD293 cells, primary antibody was diluted at 1:1000, 4° over night



Immunohistochemical analysis of paraffin-embedded human oophoroma. 1, Antibody was diluted at 1:200(4° overnight). 2, Tris-EDTA, pH9.0 was used for antigen retrieval. 3, Secondary antibody was diluted at 1:200(room temperature, 45min).

Nanjing BYabs science technology Co.,Ltd

网址: www.njbybio.com

官方热线: 025-5229-8998

监督电话: 15950492658