



LRRT4 rabbit pAb

Catalog No	BYab-12378
Isotype	IgG
Reactivity	Human; Mouse;Rat
Applications	WB;ELISA;IHC
Gene Name	LRRTM4 UNQ3075/PRO9907
Protein Name	LRRT4
Immunogen	Synthesized peptide derived from human LRRT4 AA range: 462-512
Specificity	This antibody detects endogenous levels of LRRT4 at Human/Mouse/Rat
Formulation	Liquid in PBS containing 50% glycerol, 0.5% BSA and 0.02% sodium azide.
Source	Polyclonal, Rabbit,IgG
Purification	The antibody was affinity-purified from rabbit serum by affinity-chromatography using specific immunogen.
Dilution	WB 1:500-2000;IHC-p 1:50-300; ELISA 2000-20000
Concentration	1 mg/ml
Purity	≥90%
Storage Stability	-20°C/1 year
Synonyms	
Observed Band	
Cell Pathway	Cell membrane ; Single-pass type I membrane protein . Cell junction, synapse, postsynaptic cell membrane ; Single-pass type I membrane protein .
Tissue Specificity	Expressed in neuronal tissues.
Function	function:May play a role in the development and maintenance of the vertebrate nervous system.,similarity:Belongs to the LRRTM family.,similarity:Contains 10 LRR (leucine-rich) repeats.,tissue specificity:Expressed in neuronal tissues.,
Background	
matters needing attention	Avoid repeated freezing and thawing!

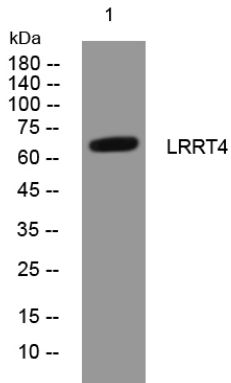
Nanjing BYabscience technology Co.,Ltd



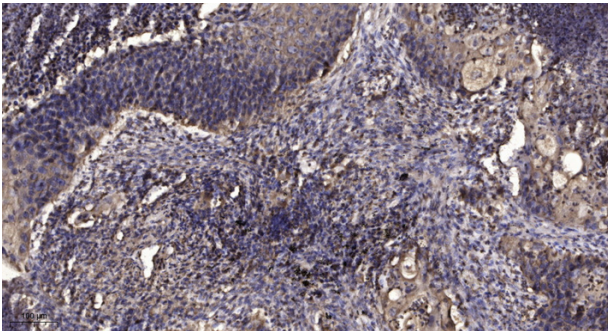
Usage suggestions

This product can be used in immunological reaction related experiments. For more information, please consult technical personnel.

Products Images



Western blot analysis of lysates from HeLa cells, primary antibody was diluted at 1:1000, 4° over night



Immunohistochemical analysis of paraffin-embedded human Squamous cell carcinoma of lung. 1, Antibody was diluted at 1:200(4° overnight). 2, Tris-EDTA, pH9.0 was used for antigen retrieval. 3, Secondary antibody was diluted at 1:200(room temperature, 45min).