



PA2GC rabbit pAb

Catalog No	BYab-12336
Isotype	IgG
Reactivity	Human; Mouse;Rat
Applications	WB
Gene Name	PLA2G2C
Protein Name	PA2GC
Immunogen	Synthesized peptide derived from human PA2GC AA range: 44-94
Specificity	This antibody detects endogenous levels of PA2GC at Human/Mouse/Rat
Formulation	Liquid in PBS containing 50% glycerol, 0.5% BSA and 0.02% sodium azide.
Source	Polyclonal, Rabbit,IgG
Purification	The antibody was affinity-purified from rabbit serum by affinity-chromatography using specific immunogen.
Dilution	WB 1: 500-2000
Concentration	1 mg/ml
Purity	≥90%
Storage Stability	-20°C/1 year
Synonyms	
Observed Band	
Cell Pathway	Secreted .
Tissue Specificity	
Function	caution:Could be the product of a pseudogene. Lacks the typical His active site in position 68 that is replaced by a Ser residue, preventing the hydrolase activity.,cofactor:Binds 1 calcium ion per subunit.,function:Inactive phospholipase.,similarity:Belongs to the phospholipase A2 family.,
Background	
matters needing attention	Avoid repeated freezing and thawing!

Nanjing BYabscience technology Co.,Ltd

网址: www.njbybio.com

官方热线: 025-5229-8998

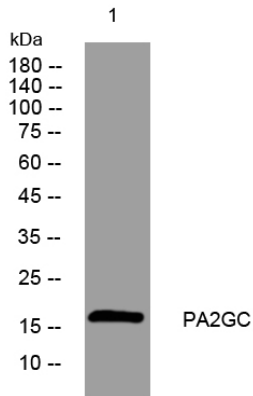
监督电话: 15950492658



Usage suggestions

This product can be used in immunological reaction related experiments. For more information, please consult technical personnel.

Products Images



Western blot analysis of lysates from HeLa cells, primary antibody was diluted at 1:1000, 4° over night