



FBX17 rabbit pAb

Catalog No	BYab-12271
Isotype	IgG
Reactivity	Human; Mouse;Rat
Applications	WB
Gene Name	FBXO17 FBG4 FBX17 FBX26 FBXO26
Protein Name	FBX17
Immunogen	Synthesized peptide derived from human FBX17 AA range: 61-111
Specificity	This antibody detects endogenous levels of FBX17 at Human/Mouse/Rat
Formulation	Liquid in PBS containing 50% glycerol, 0.5% BSA and 0.02% sodium azide.
Source	Polyclonal, Rabbit,IgG
Purification	The antibody was affinity-purified from rabbit serum by affinity-chromatography using specific immunogen.
Dilution	WB 1: 500-2000
Concentration	1 mg/ml
Purity	≥90%
Storage Stability	-20°C/1 year
Synonyms	
Observed Band	
Cell Pathway	SCF ubiquitin ligase complex,
Tissue Specificity	Expressed in heart, skeletal muscle, liver and kidney. Expressed at lower levels in spleen and brain.
Function	function:Substrate-recognition component of the SCF (SKP1-CUL1-F-box protein)-type E3 ubiquitin ligase complex.,similarity:Contains 1 F-box domain.,similarity:Contains 1 FBA (F-box associated) domain.,subunit:Directly interacts with SKP1A and CUL1.,tissue specificity:Expressed in heart, skeletal muscle, liver and kidney. Expressed at lower levels in spleen and brain.,
Background	This gene encodes a member of the F-box protein family which is characterized by the F-box motif. The F-box proteins constitute one of the four subunits of the ubiquitin protein ligase complex called SCFs (SKP1-cullin-F-box), which function in phosphorylation-dependent ubiquitination. The F-box proteins are divided into 3 classes: Fbws containing WD-40 domains, Fbls containing leucine-rich repeats, and Fbxs containing either different protein-protein interaction modules or no

Nanjing BYabscience technology Co.,Ltd



recognizable motifs. The protein encoded by this gene belongs to the F-box class and it contains an F-box domain. Alternative splicing results in multiple transcript variants. [provided by RefSeq, Jul 2013],

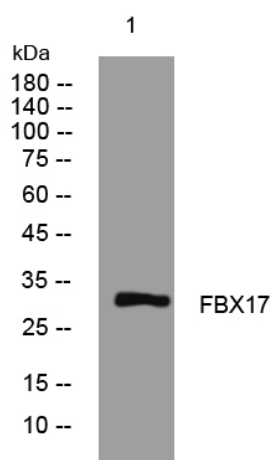
matters needing attention

Avoid repeated freezing and thawing!

Usage suggestions

This product can be used in immunological reaction related experiments. For more information, please consult technical personnel.

Products Images



Western blot analysis of lysates from MCF-7 cells, primary antibody was diluted at 1:1000, 4° over night