



# PP12C rabbit pAb

<b>Catalog No</b>	BYab-12094
<b>Isotype</b>	IgG
<b>Reactivity</b>	Human; Mouse
<b>Applications</b>	WB;IHC
<b>Gene Name</b>	PPP1R12C LENG3 MBS85
<b>Protein Name</b>	PP12C
<b>Immunogen</b>	Synthesized peptide derived from human PP12C AA range: 542-592
<b>Specificity</b>	This antibody detects endogenous levels of PP12C at Human/Mouse
<b>Formulation</b>	Liquid in PBS containing 50% glycerol, 0.5% BSA and 0.02% sodium azide.
<b>Source</b>	Polyclonal, Rabbit,IgG
<b>Purification</b>	The antibody was affinity-purified from rabbit serum by affinity-chromatography using specific immunogen.
<b>Dilution</b>	WB 1:500-2000;IHC-p 1:50-300
<b>Concentration</b>	1 mg/ml
<b>Purity</b>	≥90%
<b>Storage Stability</b>	-20°C/1 year
<b>Synonyms</b>	
<b>Observed Band</b>	
<b>Cell Pathway</b>	Cytoplasm . Cytoplasm, cytoskeleton, stress fiber .
<b>Tissue Specificity</b>	Ubiquitously expressed. Highly expressed in heart.
<b>Function</b>	caution:Although assigned as two separate genes (PPP1R12C and LENG3), it is probable that LENG3 does not exist by itself and is a part of the PPP1R12C gene.,function:Regulates myosin phosphatase activity.,PTM:Phosphorylated upon DNA damage, probably by ATM or ATR.,sequence caution:Unspliced mRNA.,similarity:Contains 4 ANK repeats.,subcellular location:Along actomyosin filaments and stress fibers.,subunit:PP1 comprises a catalytic subunit, PPP1CA, PPP1CB or PPP1CC, and one or several targeting or regulatory subunits. PPP1R12C mediates binding to myosin. Interacts via its N-terminus with PPP1CB. Interacts with IL16. Interacts with the coiled-coil domain of MPRIP.,tissue specificity:Ubiquitously expressed. Highly expressed in heart.,

**Nanjing BYabscience technology Co.,Ltd**

网址: [www.njbybio.com](http://www.njbybio.com)

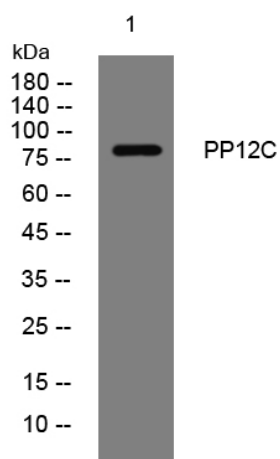
官方热线: 025-5229-8998

监督电话: 15950492658

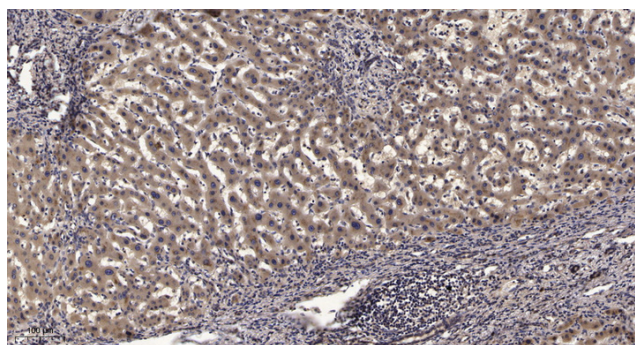


<b>Background</b>	The gene encodes a subunit of myosin phosphatase. The encoded protein regulates the catalytic activity of protein phosphatase 1 delta and assembly of the actin cytoskeleton. Alternatively spliced transcript variants encoding multiple isoforms have been observed for this gene. [provided by RefSeq, Oct 2012],
<b>matters needing attention</b>	Avoid repeated freezing and thawing!
<b>Usage suggestions</b>	This product can be used in immunological reaction related experiments. For more information, please consult technical personnel.

## Products Images



Western blot analysis of lysates from VEC cells, primary antibody was diluted at 1:1000, 4° over night



Immunohistochemical analysis of paraffin-embedded human liver cancer. 1, Antibody was diluted at 1:200(4° overnight). 2, Tris-EDTA, pH9.0 was used for antigen retrieval. 3, Secondary antibody was diluted at 1:200(room temperature, 45min).