



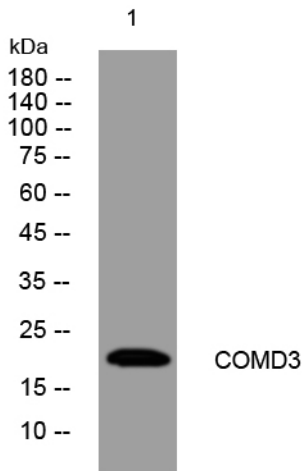
COMD3 rabbit pAb

Catalog No	BYab-12062
Isotype	IgG
Reactivity	Human; Mouse;Rat
Applications	WB
Gene Name	COMMD3 BUP C10orf8
Protein Name	COMD3
Immunogen	Synthesized peptide derived from human COMD3 AA range: 24-74
Specificity	This antibody detects endogenous levels of COMD3 at Human/Mouse/Rat
Formulation	Liquid in PBS containing 50% glycerol, 0.5% BSA and 0.02% sodium azide.
Source	Polyclonal, Rabbit,IgG
Purification	The antibody was affinity-purified from rabbit serum by affinity-chromatography using specific immunogen.
Dilution	WB 1: 500-2000
Concentration	1 mg/ml
Purity	≥90%
Storage Stability	-20°C/1 year
Synonyms	
Observed Band	
Cell Pathway	Cytoplasm . Nucleus .
Tissue Specificity	Widely expressed with highest expression in thymus.
Function	similarity:Contains 1 COMM domain.,tissue specificity:Widely expressed with highest expression in thymus.,
Background	
matters needing attention	Avoid repeated freezing and thawing!
Usage suggestions	This product can be used in immunological reaction related experiments. For more information, please consult technical personnel.

Nanjing BYabscience technology Co.,Ltd



Products Images



Western blot analysis of lysates from MCF-7 cells,
primary antibody was diluted at 1:1000, 4° over night