



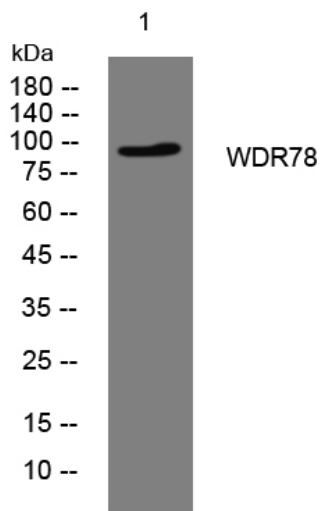
# WDR78 rabbit pAb

Catalog No	BYab-11960
Isotype	IgG
Reactivity	Human; Mouse;Rat
Applications	WB
Gene Name	WDR78
Protein Name	WDR78
Immunogen	Synthesized peptide derived from human WDR78 AA range: 281-331
Specificity	This antibody detects endogenous levels of WDR78 at Human/Mouse/Rat
Formulation	Liquid in PBS containing 50% glycerol, 0.5% BSA and 0.02% sodium azide.
Source	Polyclonal, Rabbit,IgG
Purification	The antibody was affinity-purified from rabbit serum by affinity-chromatography using specific immunogen.
Dilution	WB 1: 500-2000
Concentration	1 mg/ml
Purity	≥90%
Storage Stability	-20°C/1 year
Synonyms	
Observed Band	
Cell Pathway	Cytoplasm, cytoskeleton, flagellum axoneme . Cytoplasm, cytoskeleton, cilium axoneme . Dynein axonemal particle .
Tissue Specificity	
Function	similarity:Contains 6 WD repeats.,
Background	
matters needing attention	Avoid repeated freezing and thawing!
Usage suggestions	This product can be used in immunological reaction related experiments. For more information, please consult technical personnel.

Nanjing BYabscience technology Co.,Ltd



## Products Images



Western blot analysis of lysates from SH-SY5Y cells,  
primary antibody was diluted at 1:1000, 4° over night