



ZCHC7 rabbit pAb

Catalog No	BYab-11915
Isotype	IgG
Reactivity	Human; Mouse;Rat
Applications	WB
Gene Name	ZCCHC7 HSPC086
Protein Name	ZCHC7
Immunogen	Synthesized peptide derived from human ZCHC7 AA range: 4-54
Specificity	This antibody detects endogenous levels of ZCHC7 at Human/Mouse/Rat
Formulation	Liquid in PBS containing 50% glycerol, 0.5% BSA and 0.02% sodium azide.
Source	Polyclonal, Rabbit,IgG
Purification	The antibody was affinity-purified from rabbit serum by affinity-chromatography using specific immunogen.
Dilution	WB 1: 500-2000
Concentration	1 mg/ml
Purity	≥90%
Storage Stability	-20°C/1 year
Synonyms	
Observed Band	
Cell Pathway	Nucleus, nucleolus .
Tissue Specificity	
Function	caution:It is uncertain whether Met-1 or Met-2 is the initiator.,sequence caution:Contaminating sequence. Potential poly-A sequence.,similarity:Contains 4 CCHC-type zinc fingers.,
Background	
matters needing attention	Avoid repeated freezing and thawing!

Nanjing BYabscience technology Co.,Ltd

网址: www.njbybio.com

官方热线: 025-5229-8998

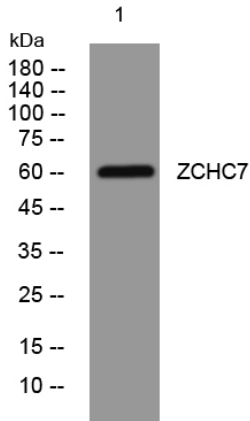
监督电话: 15950492658



Usage suggestions

This product can be used in immunological reaction related experiments. For more information, please consult technical personnel.

Products Images



Western blot analysis of lysates from HeLa cells,
primary antibody was diluted at 1:1000, 4° over night