



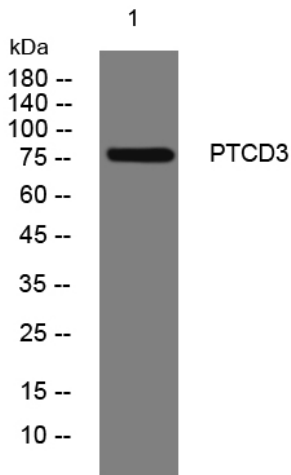
PTCD3 rabbit pAb

Catalog No	BYab-11850
Isotype	IgG
Reactivity	Human; Mouse
Applications	WB;IHC
Gene Name	PTCD3 TRG15
Protein Name	PTCD3
Immunogen	Synthesized peptide derived from human PTCD3 AA range: 624-674
Specificity	This antibody detects endogenous levels of PTCD3 at Human/Mouse
Formulation	Liquid in PBS containing 50% glycerol, 0.5% BSA and 0.02% sodium azide.
Source	Polyclonal, Rabbit,IgG
Purification	The antibody was affinity-purified from rabbit serum by affinity-chromatography using specific immunogen.
Dilution	WB 1:500-2000;IHC-p 1:50-300
Concentration	1 mg/ml
Purity	≥90%
Storage Stability	-20°C/1 year
Synonyms	
Observed Band	
Cell Pathway	Mitochondrion .
Tissue Specificity	Abundant in testes, skeletal muscle and heart tissue.
Function	similarity:Belongs to the PTCD3 family.,similarity:Contains 10 PPR (pentatricopeptide) repeats.,
Background	
matters needing attention	Avoid repeated freezing and thawing!
Usage suggestions	This product can be used in immunological reaction related experiments. For more information, please consult technical personnel.

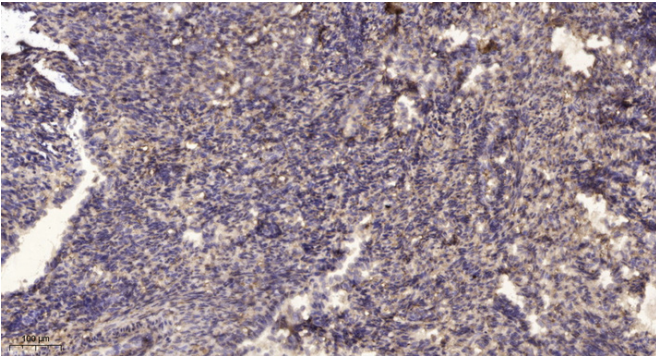
Nanjing BYabscience technology Co.,Ltd



Products Images



Western blot analysis of lysates from HpeG2 cells, primary antibody was diluted at 1:1000, 4° over night



Immunohistochemical analysis of paraffin-embedded human uterus. 1, Antibody was diluted at 1:200(4° overnight). 2, Tris-EDTA, pH9.0 was used for antigen retrieval. 3, Secondary antibody was diluted at 1:200(room temperature, 45min).