



TM192 rabbit pAb

Catalog No	BYab-11844
Isotype	IgG
Reactivity	Human; Mouse;Rat
Applications	WB;IHC
Gene Name	TMEM192
Protein Name	TM192
Immunogen	Synthesized peptide derived from human TM192 AA range: 27-77
Specificity	This antibody detects endogenous levels of TM192 at Human/Mouse/Rat
Formulation	Liquid in PBS containing 50% glycerol, 0.5% BSA and 0.02% sodium azide.
Source	Polyclonal, Rabbit,IgG
Purification	The antibody was affinity-purified from rabbit serum by affinity-chromatography using specific immunogen.
Dilution	WB 1:500-2000;IHC-p 1:50-300
Concentration	1 mg/ml
Purity	≥90%
Storage Stability	-20°C/1 year
Synonyms	
Observed Band	
Cell Pathway	Lysosome membrane ; Multi-pass membrane protein . Late endosome .
Tissue Specificity	Strongly expressed in kidney, liver, lung and pancreas.
Function	PTM:Phosphorylated upon DNA damage, probably by ATM or ATR.,similarity:Belongs to the TMEM192 family.,
Background	
matters needing attention	Avoid repeated freezing and thawing!
Usage suggestions	This product can be used in immunological reaction related experiments. For more information, please consult technical personnel.

Nanjing BYabs science technology Co.,Ltd

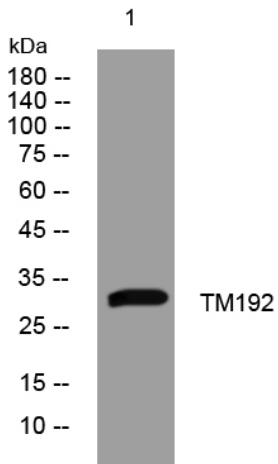
网址: www.njbybio.com

官方热线: 025-5229-8998

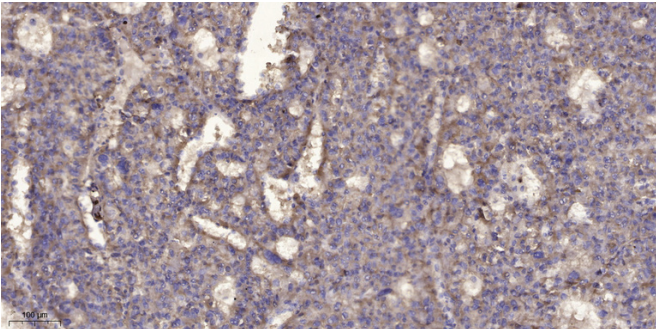
监督电话: 15950492658



Products Images



Western blot analysis of lysates from MCF-7 cells, primary antibody was diluted at 1:1000, 4° over night



Immunohistochemical analysis of paraffin-embedded human liver cancer. 1, Antibody was diluted at 1:200(4° overnight). 2, Tris-EDTA, pH9.0 was used for antigen retrieval. 3, Secondary antibody was diluted at 1:200(room temperature, 45min).