



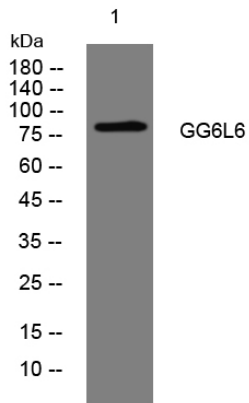
# MRAS1 rabbit pAb

Catalog No	BYab-11817
Isotype	IgG
Reactivity	Human;Rat;Mouse;
Applications	WB
Gene Name	MRGPRG-AS1 C11orf36 HSD-40 HSD40
Protein Name	MRAS1
Immunogen	Synthesized peptide derived from human MRAS1 AA range: 42-92
Specificity	This antibody detects endogenous levels of MRAS1 at Human
Formulation	Liquid in PBS containing 50% glycerol, 0.5% BSA and 0.02% sodium azide.
Source	Polyclonal, Rabbit,IgG
Purification	The antibody was affinity-purified from rabbit serum by affinity-chromatography using specific immunogen.
Dilution	WB 1: 500-2000
Concentration	1 mg/ml
Purity	≥90%
Storage Stability	-20°C/1 year
Synonyms	
Observed Band	
Cell Pathway	
Tissue Specificity	
Function	
Background	
matters needing attention	Avoid repeated freezing and thawing!
Usage suggestions	This product can be used in immunological reaction related experiments. For more information, please consult technical personnel.

Nanjing BYabscience technology Co.,Ltd



## Products Images



Western blot analysis of lysates from PC-12 cells,  
primary antibody was diluted at 1:1000, 4° over night