



DYL1 rabbit pAb

Catalog No	BYab-11806
Isotype	IgG
Reactivity	Human; Mouse;Rat
Applications	IHC;IF
Gene Name	DYNLL1 DLC1 DNCL1 DNCLC1 HDLC1
Protein Name	DYL1
Immunogen	Synthesized peptide derived from human DYL1 AA range: 1-50
Specificity	This antibody detects endogenous levels of DYL1 at Human/Mouse/Rat
Formulation	Liquid in PBS containing 50% glycerol, 0.5% BSA and 0.02% sodium azide.
Source	Polyclonal, Rabbit,IgG
Purification	The antibody was affinity-purified from rabbit serum by affinity-chromatography using specific immunogen.
Dilution	IHC-p 1: 50-200. IF 1:50-200
Concentration	1 mg/ml
Purity	≥90%
Storage Stability	-20°C/1 year
Synonyms	
Observed Band	
Cell Pathway	Cytoplasm, cytoskeleton, microtubule organizing center, centrosome . Cytoplasm, cytoskeleton . Nucleus . Mitochondrion . Upon induction of apoptosis translocates together with BCL2L11 to mitochondria. .
Tissue Specificity	Ubiquitous (PubMed:8628263). Expressed in testis (PubMed:22965910).
Function	function:Binds and inhibits the catalytic activity of neuronal nitric oxide synthase.,function:May be involved in some aspects of dynein-related intracellular transport and motility. May play a role in changing or maintaining the spatial distribution of cytoskeletal structures.,similarity:Belongs to the dynein light chain family.,subunit:Consists of at least two heavy chains and a number of intermediate and light chains. Interacts with rabies P protein (By similarity). Interacts with TXNDC17.,tissue specificity:Ubiquitous.,
Background	Cytoplasmic dyneins are large enzyme complexes with a molecular mass of about 1,200 kD. They contain two force-producing heads formed primarily from dynein heavy chains, and stalks linking the heads to a basal domain, which contains a

Nanjing BYabscience technology Co.,Ltd



varying number of accessory intermediate chains. The complex is involved in intracellular transport and motility. The protein described in this record is a light chain and exists as part of this complex but also physically interacts with and inhibits the activity of neuronal nitric oxide synthase. Binding of this protein destabilizes the neuronal nitric oxide synthase dimer, a conformation necessary for activity, and it may regulate numerous biologic processes through its effects on nitric oxide synthase activity. Alternate transcriptional splice variants have been characterized. [provided by RefSeq, Jul 2008],

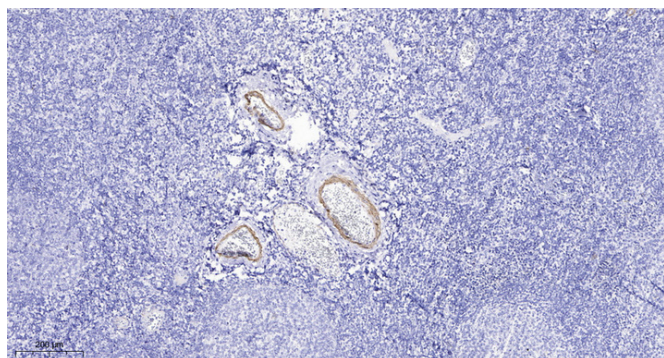
matters needing attention

Avoid repeated freezing and thawing!

Usage suggestions

This product can be used in immunological reaction related experiments. For more information, please consult technical personnel.

Products Images



Immunohistochemical analysis of paraffin-embedded human tonsil. 1, Antibody was diluted at 1:200(4° overnight). 2, Tris-EDTA,pH9.0 was used for antigen retrieval. 3,Secondary antibody was diluted at 1:200(room temperature, 30min).