



SDS3 rabbit pAb

Catalog No	BYab-11644
Isotype	IgG
Reactivity	Human; Mouse
Applications	WB;IHC
Gene Name	SUDS3 SAP45 SDS3
Protein Name	SDS3
Immunogen	Synthesized peptide derived from human SDS3 AA range: 96-146
Specificity	This antibody detects endogenous levels of SDS3 at Human/Mouse
Formulation	Liquid in PBS containing 50% glycerol, 0.5% BSA and 0.02% sodium azide.
Source	Polyclonal, Rabbit,IgG
Purification	The antibody was affinity-purified from rabbit serum by affinity-chromatography using specific immunogen.
Dilution	WB 1:500-2000;IHC-p 1:50-300
Concentration	1 mg/ml
Purity	≥90%
Storage Stability	-20°C/1 year
Synonyms	
Observed Band	
Cell Pathway	Nucleus .
Tissue Specificity	Expressed in various cancer cell ines.
Function	domain:The C-terminus is involved in transcriptional repression by HDAC-independent mechanisms.,function:Regulatory protein which represses transcription and augments histone deacetylase activity of HDAC1. May have a potential role in tumor suppressor pathways (By similarity). May function in the assembly and/or enzymatic activity of the mSin3A corepressor complex or in mediating interactions between the complex and other regulatory complexes.,similarity:Belongs to the SDS3 family.,subunit:Homodimer. Component of the SIN3 histone deacetylase (HDAC) corepressor complex. Interacts with SIN3A. Interaction with SIN3B enhances the interaction between SIN3B and HDAC1 to form a complex (By similarity). Interacts with HCFC1. Component of a mSin3A corepressor complex that contains SIN3A, SAP130, SUDS3/SAP45, ARID4B/SAP180, HDAC1 and HDAC2.,tissue

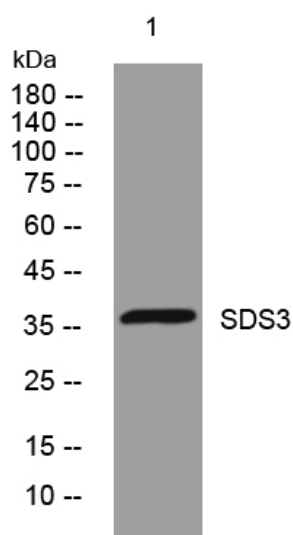
Nanjing BYabscience technology Co.,Ltd



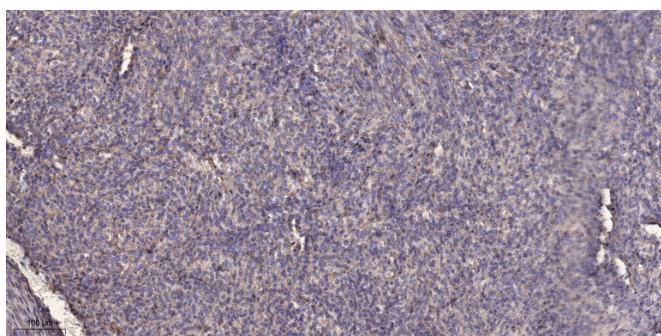
specificity: Expressed in various cancer cell lines.

Background	SDS3 is a subunit of the histone deacetylase (see HDAC1; MIM 601241)-dependent SIN3A (MIM 607776) corepressor complex (Fleischer et al., 2003 [PubMed 12724404]).[supplied by OMIM, Mar 2008],
matters needing attention	Avoid repeated freezing and thawing!
Usage suggestions	This product can be used in immunological reaction related experiments. For more information, please consult technical personnel.

Products Images



Western blot analysis of lysates from 293T cells, primary antibody was diluted at 1:1000, 4° over night



Immunohistochemical analysis of paraffin-embedded human Colon cancer. 1, Antibody was diluted at 1:200(4° overnight). 2, Tris-EDTA, pH9.0 was used for antigen retrieval. 3, Secondary antibody was diluted at 1:200(room temperature, 45min).

Nanjing BYabs science technology Co.,Ltd

网址: www.njbybio.com

官方热线: 025-5229-8998

监督电话: 15950492658