



TXND8 rabbit pAb

Catalog No	BYab-11587
Isotype	IgG
Reactivity	Human; Mouse;Rat
Applications	WB
Gene Name	TXNDC8 SPTRX3 TRX6
Protein Name	TXND8
Immunogen	Synthesized peptide derived from human TXND8 AA range: 64-114
Specificity	This antibody detects endogenous levels of TXND8 at Human/Mouse/Rat
Formulation	Liquid in PBS containing 50% glycerol, 0.5% BSA and 0.02% sodium azide.
Source	Polyclonal, Rabbit,IgG
Purification	The antibody was affinity-purified from rabbit serum by affinity-chromatography using specific immunogen.
Dilution	WB 1: 500-2000
Concentration	1 mg/ml
Purity	≥90%
Storage Stability	-20°C/1 year
Synonyms	
Observed Band	
Cell Pathway	Cytoplasm . Golgi apparatus .
Tissue Specificity	Testis-specific. Only expressed during spermiogenesis, prominently in the Golgi apparatus of pachytene spermatocytes and round and elongated spermatids, with a transient localization in the developing acrosome of round spermatids (at protein level).
Function	function:May be required for post-translational modifications of proteins required for acrosomal biogenesis. May act by reducing disulfide bonds within the sperm.,miscellaneous:Increased levels, possibly caused by overexpression, are observed in morphologically abnormal spermatozoa from infertile men, suggesting that it may be used as a marker of aberrant spermatogenesis.,similarity:Belongs to the thioredoxin family.,similarity:Contains 1 thioredoxin domain.,tissue specificity:Testis-specific. Only expressed during spermiogenesis, prominently in the Golgi apparatus of pachytene spermatocytes and round and elongated spermatids, with a transient localization in the developing acrosome of round spermatids (at protein level).,

Nanjing BYabscience technology Co.,Ltd



Background

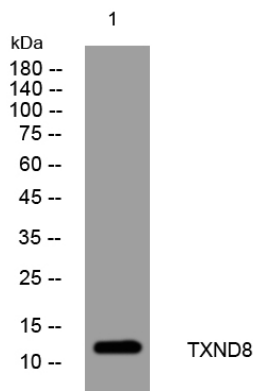
matters needing attention

Avoid repeated freezing and thawing!

Usage suggestions

This product can be used in immunological reaction related experiments. For more information, please consult technical personnel.

Products Images



Western blot analysis of lysates from Jarkat cells, primary antibody was diluted at 1:1000, 4°over night