



# TRM6 rabbit pAb

<b>Catalog No</b>	BYab-11522
<b>Isotype</b>	IgG
<b>Reactivity</b>	Human; Mouse
<b>Applications</b>	WB
<b>Gene Name</b>	TRMT6 KIAA1153 TRM6 CGI-09
<b>Protein Name</b>	TRM6
<b>Immunogen</b>	Synthesized peptide derived from human TRM6 AA range: 175-225
<b>Specificity</b>	This antibody detects endogenous levels of TRM6 at Human/Mouse
<b>Formulation</b>	Liquid in PBS containing 50% glycerol, 0.5% BSA and 0.02% sodium azide.
<b>Source</b>	Polyclonal, Rabbit,IgG
<b>Purification</b>	The antibody was affinity-purified from rabbit serum by affinity-chromatography using specific immunogen.
<b>Dilution</b>	WB 1: 500-2000
<b>Concentration</b>	1 mg/ml
<b>Purity</b>	≥90%
<b>Storage Stability</b>	-20°C/1 year
<b>Synonyms</b>	
<b>Observed Band</b>	
<b>Cell Pathway</b>	Nucleus .
<b>Tissue Specificity</b>	Expressed in brain, liver, testis and ovary.
<b>Function</b>	function:Substrate-binding subunit of tRNA (adenine-N(1)-)-methyltransferase, which catalyzes the formation of N(1)-methyladenine at position 58 (m1A58) in initiator methionyl-tRNA.,PTM:Phosphorylated upon DNA damage, probably by ATM or ATR.,similarity:Belongs to the TRM6/GCD10 family.,subunit:tRNA (adenine-N(1)-)-methyltransferase is a heterodimer of trm6 and trm61.,tissue specificity:Expressed in brain, liver, testis and ovary.,
<b>Background</b>	This gene encodes a member of the tRNA methyltransferase 6 protein family. A similar protein in yeast is part of a two component methyltransferase, which is involved in the postranslational modification that produces the modified nucleoside 1-methyladenosine in tRNAs. Modified 1-methyladenosine influences initiator methionine stability and may be involved in the replication of human

**Nanjing BYabs science technology Co.,Ltd**



immunodeficiency virus type 1. Alternative splicing results in multiple transcript variants. [provided by RefSeq, Jul 2013],

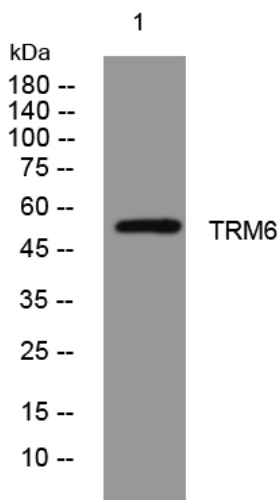
**matters needing attention**

Avoid repeated freezing and thawing!

**Usage suggestions**

This product can be used in immunological reaction related experiments. For more information, please consult technical personnel.

## Products Images



Western blot analysis of lysates from MCF-7 cells, primary antibody was diluted at 1:1000, 4°over night