



MSH5 rabbit pAb

Catalog No	BYab-11436
Isotype	IgG
Reactivity	Human; Mouse;Rat
Applications	WB;IHC
Gene Name	MSH5
Protein Name	MSH5
Immunogen	Synthesized peptide derived from human MSH5 AA range: 13-63
Specificity	This antibody detects endogenous levels of MSH5 at Human/Mouse/Rat
Formulation	Liquid in PBS containing 50% glycerol, 0.5% BSA and 0.02% sodium azide.
Source	Polyclonal, Rabbit,IgG
Purification	The antibody was affinity-purified from rabbit serum by affinity-chromatography using specific immunogen.
Dilution	WB 1:500-2000;IHC-p 1:50-300
Concentration	1 mg/ml
Purity	≥90%
Storage Stability	-20°C/1 year
Synonyms	
Observed Band	
Cell Pathway	synaptonemal complex,mismatch repair complex,
Tissue Specificity	Widely expressed, with high levels in testis and ovary, including granulosa cells (PubMed:9740671, PubMed:28175301). Also expressed in fetal ovary and adrenal gland (PubMed:28175301).
Function	function:Involved in meiotic recombination. Facilitate crossovers between homologs during meiosis.,similarity:Belongs to the DNA mismatch repair mutS family.,subunit:Heterooligomer of MSH4 and MSH5. Interacts with HJURP.,tissue specificity:Ubiquitous, but highly expressed in testis, and thymus.,
Background	This gene encodes a member of the mutS family of proteins that are involved in DNA mismatch repair and meiotic recombination. This protein is similar to a Saccharomyces cerevisiae protein that participates in segregation fidelity and crossing-over events during meiosis. This protein plays a role in promoting ionizing radiation-induced apoptosis. This protein forms hetero-oligomers with another member of this family, mutS homolog 4. Polymorphisms in this gene have

Nanjing BYabscience technology Co.,Ltd



been linked to various human diseases, including IgA deficiency, common variable immunodeficiency, and premature ovarian failure. Alternative splicing results multiple transcript variants. Read-through transcription also exists between this gene and the downstream chromosome 6 open reading frame 26 (C6orf26) gene. [provided by RefSeq, Feb 2011],

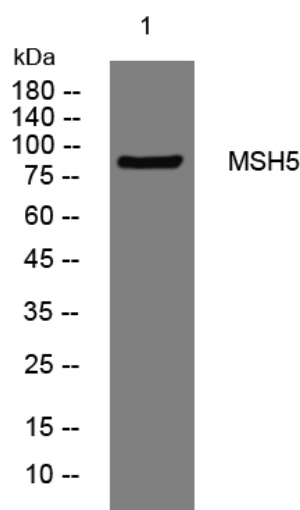
matters needing attention

Avoid repeated freezing and thawing!

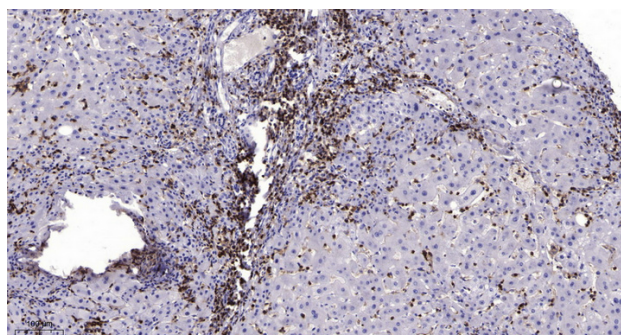
Usage suggestions

This product can be used in immunological reaction related experiments. For more information, please consult technical personnel.

Products Images



Western blot analysis of lysates from 3T3 cells, primary antibody was diluted at 1:1000, 4° over night



Immunohistochemical analysis of paraffin-embedded human liver cancer. 1, Antibody was diluted at 1:200(4° overnight). 2, Tris-EDTA, pH9.0 was used for antigen retrieval. 3, Secondary antibody was diluted at 1:200(room temperature, 45min).

Nanjing BYabs science technology Co.,Ltd

网址: www.njbybio.com

官方热线: 025-5229-8998

监督电话: 15950492658