



SG1D4 rabbit pAb

Catalog No	BYab-11349
Isotype	IgG
Reactivity	Human;Rat;Mouse;
Applications	IHC;IF
Gene Name	SCGB1D4 UNQ517/PRO812
Protein Name	SG1D4
Immunogen	Synthesized peptide derived from human SG1D4 AA range: 28-78
Specificity	This antibody detects endogenous levels of SG1D4 at Human
Formulation	Liquid in PBS containing 50% glycerol, 0.5% BSA and 0.02% sodium azide.
Source	Polyclonal, Rabbit,IgG
Purification	The antibody was affinity-purified from rabbit serum by affinity-chromatography using specific immunogen.
Dilution	IHC-p 1: 50-200. IF 1:50-200
Concentration	1 mg/ml
Purity	≥90%
Storage Stability	-20°C/1 year
Synonyms	
Observed Band	
Cell Pathway	Secreted.
Tissue Specificity	Expressed in all tissues; the highest level of expression is detectable in lymph nodes, tonsil, cultured lymphoblasts and ovary.
Function	function:Seems to be involved in the regulation of chemotactic cell migration and invasion.,induction:By interferon gamma.,similarity:Belongs to the secretoglobin family. Lipophilin subfamily.,tissue specificity:Expressed in all tissues; the highest level of expression is detectable in lymph nodes, tonsil, cultured lymphoblasts and ovary.,
Background	
matters needing attention	Avoid repeated freezing and thawing!

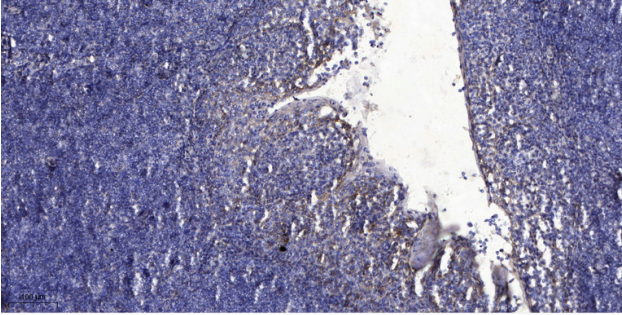
Nanjing BYabs science technology Co.,Ltd



Usage suggestions

This product can be used in immunological reaction related experiments. For more information, please consult technical personnel.

Products Images



Immunohistochemical analysis of paraffin-embedded human tonsil. 1, Antibody was diluted at 1:200(4° overnight). 2, Tris-EDTA,pH9.0 was used for antigen retrieval. 3,Secondary antibody was diluted at 1:200(room temperature, 30min).