



# SRGN rabbit pAb

Catalog No	BYab-11299
Isotype	IgG
Reactivity	Human; Mouse;Rat
Applications	WB
Gene Name	SRGN PRG PRG1
Protein Name	SRGN
Immunogen	Synthesized peptide derived from human SRGN AA range: 30-80
Specificity	This antibody detects endogenous levels of SRGN at Human/Mouse/Rat
Formulation	Liquid in PBS containing 50% glycerol, 0.5% BSA and 0.02% sodium azide.
Source	Polyclonal, Rabbit,IgG
Purification	The antibody was affinity-purified from rabbit serum by affinity-chromatography using specific immunogen.
Dilution	WB 1: 500-2000
Concentration	1 mg/ml
Purity	≥90%
Storage Stability	-20°C/1 year
Synonyms	
Observed Band	
Cell Pathway	Cytoplasmic granule . Cytolytic granule . Secreted, extracellular space . Golgi apparatus . Found in mast cell granules and in cytoplasmic granules of cytolytic T lymphocytes from where it is secreted upon cell activation (By similarity). Secreted constitutively by endothelial cells and macrophages (PubMed:11154222). Located to Golgi apparatus during neutrophil differentiation (PubMed:15136585). .
Tissue Specificity	
Function	function:Plays a role in formation of mast cell secretory granules and mediates storage of various compounds in secretory vesicles. Required for storage of some proteases in both connective tissue and mucosal mast cells and for storage of granzyme B in T lymphocytes. Plays a role in localizing neutrophil elastase in azurophil granules of neutrophils. Mediates processing of MMP2. Plays a role in cytotoxic cell granule-mediated apoptosis by forming a complex with granzyme B which is delivered to cells by perforin to induce apoptosis. Regulates the secretion of TNF-alpha and may also regulate protease secretion. Inhibits bone

Nanjing BYabscience technology Co.,Ltd



mineralization.,induction:By EBV.,PTM:O-glycosylated; contains chondroitin sulfate and heparan sulfate.,similarity:Belongs to the serglycin family.,subcellular location:Found in mast cell granules and in cytoplasmic granules of cytolytic T lymphocytes from where it is s

## Background

This gene encodes a protein best known as a hematopoietic cell granule proteoglycan. Proteoglycans stored in the secretory granules of many hematopoietic cells also contain a protease-resistant peptide core, which may be important for neutralizing hydrolytic enzymes. This encoded protein was found to be associated with the macromolecular complex of granzymes and perforin, which may serve as a mediator of granule-mediated apoptosis. Two transcript variants, only one of them protein-coding, have been found for this gene. [provided by RefSeq, Jul 2010],

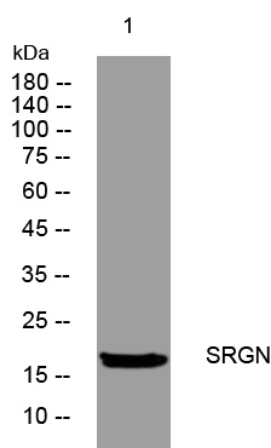
## matters needing attention

Avoid repeated freezing and thawing!

## Usage suggestions

This product can be used in immunological reaction related experiments. For more information, please consult technical personnel.

## Products Images



Western blot analysis of lysates from VEC cells, primary antibody was diluted at 1:1000, 4° over night