



# KIF24 rabbit pAb

<b>Catalog No</b>	BYab-11181
<b>Isotype</b>	IgG
<b>Reactivity</b>	Human; Mouse
<b>Applications</b>	WB;IHC
<b>Gene Name</b>	KIF24 C9orf48
<b>Protein Name</b>	KIF24
<b>Immunogen</b>	Synthesized peptide derived from human KIF24 AA range: 1-51
<b>Specificity</b>	This antibody detects endogenous levels of KIF24 at Human/Mouse
<b>Formulation</b>	Liquid in PBS containing 50% glycerol, 0.5% BSA and 0.02% sodium azide.
<b>Source</b>	Polyclonal, Rabbit,IgG
<b>Purification</b>	The antibody was affinity-purified from rabbit serum by affinity-chromatography using specific immunogen.
<b>Dilution</b>	WB 1:500-2000;IHC-p 1:50-300
<b>Concentration</b>	1 mg/ml
<b>Purity</b>	≥90%
<b>Storage Stability</b>	-20°C/1 year
<b>Synonyms</b>	
<b>Observed Band</b>	
<b>Cell Pathway</b>	Cytoplasm, cytoskeleton, microtubule organizing center, centrosome, centriole . Cytoplasm, cytoskeleton, microtubule organizing center, centrosome . Primarily localizes to the mother centriole/basal body and is either absent at daughter centriole.
<b>Tissue Specificity</b>	
<b>Function</b>	similarity:Belongs to the kinesin-like protein family.,similarity:Contains 1 kinesin-motor domain.,similarity:Contains 1 SAM (sterile alpha motif) domain.,
<b>Background</b>	Kinesins, such as KIF24, are microtubule-dependent ATPases that function as molecular motors. They play important roles in intracellular vesicle transport and cell division (summary by Venturelli et al., 2010 [PubMed 20670673]).[supplied by OMIM, Feb 2011],
<b>matters needing attention</b>	Avoid repeated freezing and thawing!

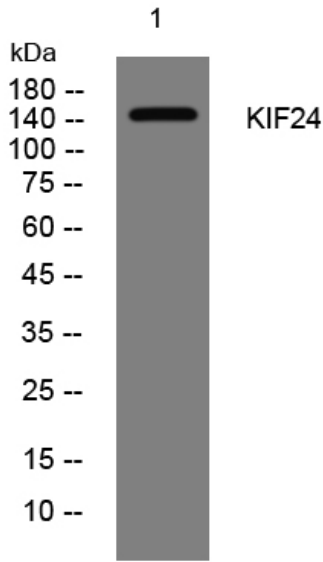
**Nanjing BYabscience technology Co.,Ltd**



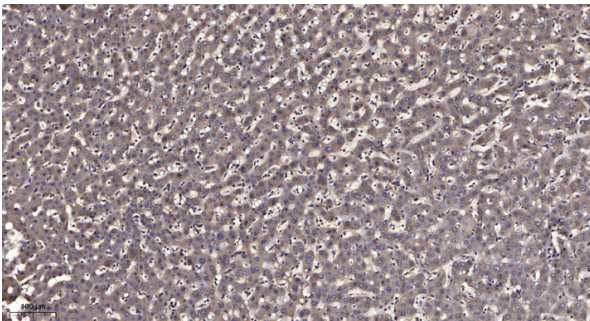
## Usage suggestions

This product can be used in immunological reaction related experiments. For more information, please consult technical personnel.

## Products Images



Western blot analysis of lysates from K562 cells, primary antibody was diluted at 1:1000, 4° over night



Immunohistochemical analysis of paraffin-embedded human liver cancer. 1, Antibody was diluted at 1:200(4° overnight). 2, Tris-EDTA, pH9.0 was used for antigen retrieval. 3, Secondary antibody was diluted at 1:200(room temperature, 45min).

Nanjing BYabscience technology Co.,Ltd

网址: [www.njbybio.com](http://www.njbybio.com)

官方热线: 025-5229-8998

监督电话: 15950492658