



CHMP7 rabbit pAb

Catalog No	BYab-11122
Isotype	IgG
Reactivity	Human; Mouse
Applications	WB
Gene Name	CHMP7
Protein Name	CHMP7
Immunogen	Synthesized peptide derived from human CHMP7 AA range: 145-195
Specificity	This antibody detects endogenous levels of CHMP7 at Human/Mouse
Formulation	Liquid in PBS containing 50% glycerol, 0.5% BSA and 0.02% sodium azide.
Source	Polyclonal, Rabbit,IgG
Purification	The antibody was affinity-purified from rabbit serum by affinity-chromatography using specific immunogen.
Dilution	WB 1: 500-2000
Concentration	1 mg/ml
Purity	≥90%
Storage Stability	-20°C/1 year
Synonyms	
Observed Band	
Cell Pathway	Cytoplasm . Nucleus envelope . Nucleus envelope . Diffused localization, with some punctate distribution, especially in the perinuclear area (PubMed:16856878). Localizes to the reforming nuclear envelope on chromatin disks during late anaphase (PubMed:26040712, PubMed:28242692). .
Tissue Specificity	
Function	function:Plays a role in the endosomal sorting pathway.,similarity:Belongs to the SNF7 family.,subcellular location:Diffused localization, with some punctate distribution, especially in the perinuclear area.,subunit:Interacts with CHMP4B, but not with VPS25.,
Background	
matters needing attention	Avoid repeated freezing and thawing!

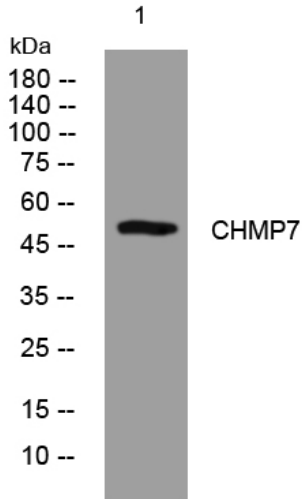
Nanjing BYabscience technology Co.,Ltd



Usage suggestions

This product can be used in immunological reaction related experiments. For more information, please consult technical personnel.

Products Images



Western blot analysis of lysates from VEC cells,
primary antibody was diluted at 1:1000, 4° over night