



# FA18A rabbit pAb

Catalog No	BYab-10994
Isotype	IgG
Reactivity	Human;Rat;Mouse;
Applications	WB
Gene Name	FAM18A
Protein Name	FA18A
Immunogen	Synthesized peptide derived from human FA18A AA range: 154-204
Specificity	This antibody detects endogenous levels of FA18A at Human
Formulation	Liquid in PBS containing 50% glycerol, 0.5% BSA and 0.02% sodium azide.
Source	Polyclonal, Rabbit,IgG
Purification	The antibody was affinity-purified from rabbit serum by affinity-chromatography using specific immunogen.
Dilution	WB 1: 500-2000
Concentration	1 mg/ml
Purity	≥90%
Storage Stability	-20°C/1 year
Synonyms	
Observed Band	
Cell Pathway	Membrane ; Multi-pass membrane protein .
Tissue Specificity	
Function	similarity:Belongs to the FAM18/TVP23 family.,
Background	This gene encodes a membrane protein associated with the Golgi apparatus, which plays a crucial role in intracellular vesicular transport. The encoded protein is likely associated with the late (trans) Golgi compartments, which are involved in the delivery of secretory and membrane proteins to the endosome, lysosome or the plasma membrane. Alternative splicing results in multiple transcript variants. [provided by RefSeq, Jan 2016],
matters needing attention	Avoid repeated freezing and thawing!

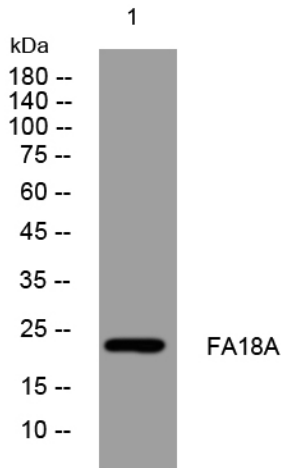
Nanjing BYabscience technology Co.,Ltd



## Usage suggestions

This product can be used in immunological reaction related experiments. For more information, please consult technical personnel.

## Products Images



Western blot analysis of lysates from HeLa cells,  
primary antibody was diluted at 1:1000, 4° over night