



Glypican-2 Polyclonal Antibody

Catalog No	BYab-10865
Isotype	IgG
Reactivity	Human;Rat;Mouse;
Applications	IHC;IF;WB
Gene Name	GPC2
Protein Name	Glypican-2
Immunogen	Synthesized peptide derived from human Glypican-2
Specificity	This antibody detects endogenous levels of human Glypican-2
Formulation	Liquid in PBS containing 50% glycerol, 0.5% BSA and 0.02% sodium azide.
Source	Polyclonal, Rabbit,IgG
Purification	The antibody was affinity-purified from rabbit serum by affinity-chromatography using specific immunogen.
Dilution	IHC-p 1:50-200, WB 1:500-2000. IF 1:50-200
Concentration	1 mg/ml
Purity	≥90%
Storage Stability	-20°C/1 year
Synonyms	Glypican-2 [Cleaved into: Secreted glypican-2]
Observed Band	65kD
Cell Pathway	Cell membrane ; Lipid-anchor, GPI-anchor ; Extracellular side .; [Secreted glypican-2]: Secreted, extracellular space .
Tissue Specificity	Brain,
Function	function:Cell surface proteoglycan that bears heparan sulfate. May fulfill a function related to the motile behaviors of developing neurons.,similarity:Belongs to the glypican family.,
Background	function:Cell surface proteoglycan that bears heparan sulfate. May fulfill a function related to the motile behaviors of developing neurons.,similarity:Belongs to the glypican family.,
matters needing attention	Avoid repeated freezing and thawing!

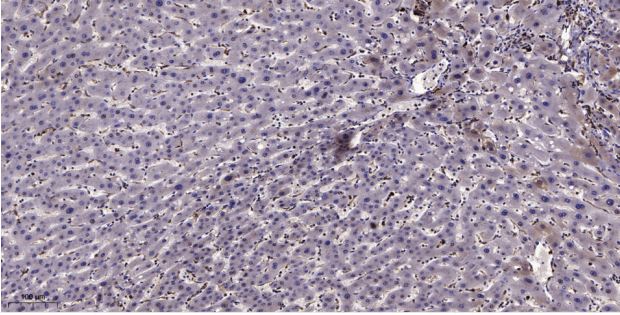
Nanjing BYabscience technology Co.,Ltd



Usage suggestions

This product can be used in immunological reaction related experiments. For more information, please consult technical personnel.

Products Images



Immunohistochemical analysis of paraffin-embedded human liver cancer. 1, Antibody was diluted at 1:200(4° overnight). 2, Tris-EDTA,pH9.0 was used for antigen retrieval. 3,Secondary antibody was diluted at 1:200(room temperature, 45min).