



# TIG1 Polyclonal Antibody

<b>Catalog No</b>	BYab-10841
<b>Isotype</b>	IgG
<b>Reactivity</b>	Human;Rat;Mouse;
<b>Applications</b>	IHC;IF;WB
<b>Gene Name</b>	RARRES1 TIG1
<b>Protein Name</b>	TIG1
<b>Immunogen</b>	Synthesized peptide derived from human TIG1
<b>Specificity</b>	This antibody detects endogenous levels of human TIG1
<b>Formulation</b>	Liquid in PBS containing 50% glycerol, 0.5% BSA and 0.02% sodium azide.
<b>Source</b>	Polyclonal, Rabbit,IgG
<b>Purification</b>	The antibody was affinity-purified from rabbit serum by affinity-chromatography using specific immunogen.
<b>Dilution</b>	IHC-p 1:50-200, WB 1:500-2000. IF 1:50-200
<b>Concentration</b>	1 mg/ml
<b>Purity</b>	≥90%
<b>Storage Stability</b>	-20°C/1 year
<b>Synonyms</b>	Retinoic acid receptor responder protein 1 (RAR-responsive protein TIG1;Tazarotene-induced gene 1 protein)
<b>Observed Band</b>	51kD
<b>Cell Pathway</b>	Membrane ; Single-pass type III membrane protein .
<b>Tissue Specificity</b>	Skin,
<b>Function</b>	induction:By tazarotene and by all the retinoic acid receptors tested.,similarity:Belongs to the protease inhibitor I47 (latexin) family.,
<b>Background</b>	This gene was identified as a retinoid acid (RA) receptor-responsive gene. It encodes a type 1 membrane protein. The expression of this gene is upregulated by tazarotene as well as by retinoic acid receptors. The expression of this gene is found to be downregulated in prostate cancer, which is caused by the methylation of its promoter and CpG island. Alternatively spliced transcript variant encoding distinct isoforms have been observed. [provided by RefSeq, Jul 2008],

Nanjing BYabscience technology Co.,Ltd



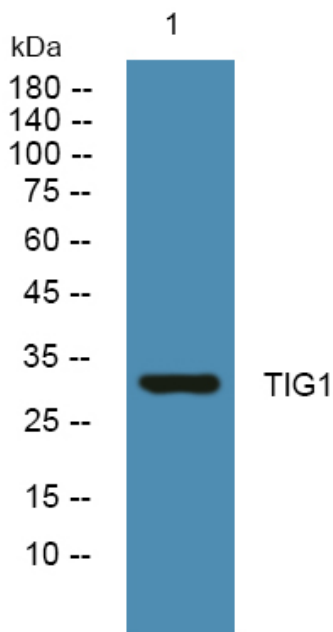
**matters needing attention**

Avoid repeated freezing and thawing!

**Usage suggestions**

This product can be used in immunological reaction related experiments. For more information, please consult technical personnel.

## Products Images



Western blot analysis of lysates from U2OS cells, primary antibody was diluted at 1:1000, 4° over night