



ANR23 rabbit pAb

Catalog No	BYab-09145
Isotype	IgG
Reactivity	Human; Mouse
Applications	WB
Gene Name	ANKRD23 DARP
Protein Name	ANR23
Immunogen	Synthesized peptide derived from human ANR23 AA range: 196-246
Specificity	This antibody detects endogenous levels of ANR23 at Human/Mouse
Formulation	Liquid in PBS containing 50% glycerol, 0.5% BSA and 0.02% sodium azide.
Source	Polyclonal, Rabbit,IgG
Purification	The antibody was affinity-purified from rabbit serum by affinity-chromatography using specific immunogen.
Dilution	WB 1: 500-2000
Concentration	1 mg/ml
Purity	≥90%
Storage Stability	-20°C/1 year
Synonyms	
Observed Band	
Cell Pathway	Nucleus. Sarcomeric I-band and some intercalated disks. .
Tissue Specificity	Mainly expressed in heart, skeletal muscle and brown adipose tissues.
Function	function:May be involved in the energy metabolism. Could be a molecular link between myofibrillar stretch-induced signaling pathways and muscle gene expression.,similarity:Contains 4 ANK repeats.,subcellular location:Sarcomeric I-band and some intercalated disks.,subunit:Interacts with titin/TTN and MYPN.,tissue specificity:Mainly expressed in heart, skeletal muscle and brown adipose tissues.,
Background	This gene is a member of the muscle ankyrin repeat protein (MARF) family and encodes a protein with four tandem ankyrin-like repeats. The protein is localized to the nucleus, functioning as a transcriptional regulator. Expression of this protein is induced during recovery following starvation. [provided by RefSeq, Jul 2008],

Nanjing BYabscience technology Co.,Ltd



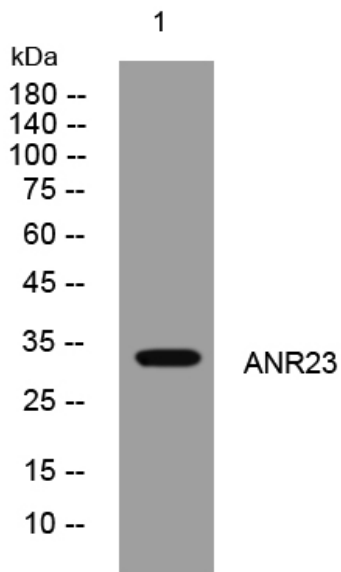
matters needing attention

Avoid repeated freezing and thawing!

Usage suggestions

This product can be used in immunological reaction related experiments. For more information, please consult technical personnel.

Products Images



Western blot analysis of lysates from U2OS cells, primary antibody was diluted at 1:1000, 4° over night