



BMP-1 Polyclonal Antibody

Catalog No	BYab-10703
Isotype	IgG
Reactivity	Human;Mouse;Rat
Applications	IHC;IF;ELISA
Gene Name	BMP1 PCOLC
Protein Name	Bone morphogenetic protein 1 (BMP-1) (EC 3.4.24.19) (Mammalian tolloid protein) (mTld) (Procollagen C-proteinase) (PCP)
Immunogen	Synthetic peptide from human protein at AA range: 131-180
Specificity	The antibody detects endogenous BMP-1
Formulation	Liquid in PBS containing 50% glycerol, 0.5% BSA and 0.02% sodium azide.
Source	Polyclonal, Rabbit,IgG
Purification	The antibody was affinity-purified from rabbit antiserum by affinity-chromatography using epitope-specific immunogen.
Dilution	IHC-p 1:50-200, ELISA 1:10000-20000. IF 1:50-200
Concentration	1 mg/ml
Purity	≥90%
Storage Stability	-20°C/1 year
Synonyms	Bone morphogenetic protein 1 (BMP-1;EC 3.4.24.19;Mammalian tolloid protein;mTld;Procollagen C-proteinase;PCP)
Observed Band	
Cell Pathway	Golgi apparatus, trans-Golgi network . Secreted, extracellular space, extracellular matrix . Secreted . Co-localizes with POSTN in the Golgi. .; [Isoform BMP1-3]: Secreted .
Tissue Specificity	Ubiquitous.
Function	catalytic activity:Cleavage of the C-terminal propeptide at Ala- -Asp in type I and II procollagens and at Arg- -Asp in type III.,cofactor:Binds 1 zinc ion per subunit.,enzyme regulation:Activity is increased by the procollagen C-endopeptidase enhancer protein.,function:Cleaves the C-terminal propeptides of procollagen I, II and III. Induces cartilage and bone formation. May participate in dorsoventral patterning during early development by cleaving chordin (CHRD).,similarity:Belongs to the peptidase M12A family.,similarity:Contains 2 EGF-like domains.,similarity:Contains 5 CUB domains.,tissue specificity:Ubiquitous.,

Nanjing BYabscience technology Co.,Ltd



Background

This gene encodes a protein that is capable of inducing formation of cartilage in vivo. Although other bone morphogenetic proteins are members of the TGF-beta superfamily, this gene encodes a protein that is not closely related to other known growth factors. This gene is expressed as alternatively spliced variants that share an N-terminal protease domain but differ in their C-terminal region. [provided by RefSeq, Aug 2008],

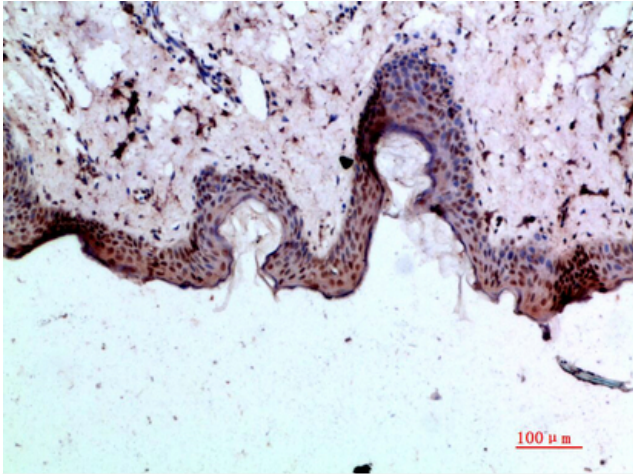
matters needing attention

Avoid repeated freezing and thawing!

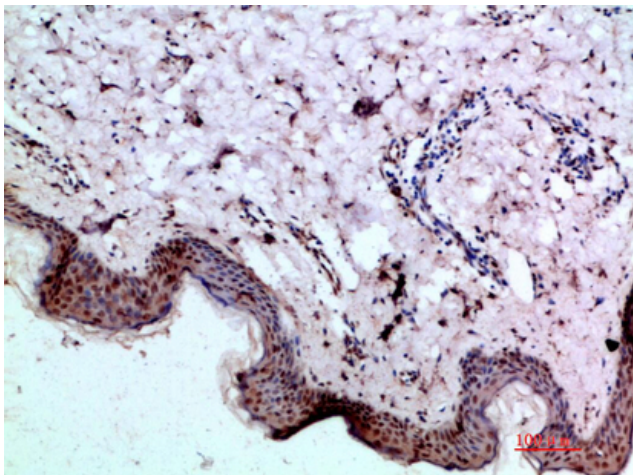
Usage suggestions

This product can be used in immunological reaction related experiments. For more information, please consult technical personnel.

Products Images



Immunohistochemical analysis of paraffin-embedded human-skin, antibody was diluted at 1:200



Immunohistochemical analysis of paraffin-embedded human-skin, antibody was diluted at 1:200