



Eotaxin-2 Polyclonal Antibody

Catalog No	BYab-10690
Isotype	IgG
Reactivity	Human;Rat;Mouse;
Applications	IHC;IF;ELISA
Gene Name	CCL24 MPIF2 SCYA24
Protein Name	C-C motif chemokine 24 (CK-beta-6) (Eosinophil chemotactic protein 2) (Eotaxin-2) (Myeloid progenitor inhibitory factor 2) (MPIF-2) (Small-inducible cytokine A24)
Immunogen	Synthetic peptide from human protein at AA range: 61-110
Specificity	The antibody detects endogenous Eotaxin-2
Formulation	Liquid in PBS containing 50% glycerol, 0.5% BSA and 0.02% sodium azide.
Source	Polyclonal, Rabbit,IgG
Purification	The antibody was affinity-purified from rabbit antiserum by affinity-chromatography using epitope-specific immunogen.
Dilution	IHC-p 1:50-200, ELISA 1:10000-20000. IF 1:50-200
Concentration	1 mg/ml
Purity	≥90%
Storage Stability	-20°C/1 year
Synonyms	C-C motif chemokine 24 (CK-beta-6;Eosinophil chemotactic protein 2;Eotaxin-2;Myeloid progenitor inhibitory factor 2;MPIF-2;Small-inducible cytokine A24)
Observed Band	
Cell Pathway	Secreted .
Tissue Specificity	Activated monocytes and activated T lymphocytes.
Function	function:Chemotactic for resting T-lymphocytes, and eosinophils. Has lower chemotactic activity for neutrophils but none for monocytes and activated lymphocytes. Is a strong suppressor of colony formation by a multipotential hematopoietic progenitor cell line. Binds to CCR3.,online information:CCL24 entry,PTM:N-glycosylated.,similarity:Belongs to the intercrine beta (chemokine CC) family.,tissue specificity:Activated monocytes and activated T lymphocytes.,
Background	This gene belongs to the subfamily of small cytokine CC genes. Cytokines are a family of secreted proteins involved in immunoregulatory and inflammatory

Nanjing BYabscience technology Co.,Ltd



processes. The CC cytokines are proteins characterized by two adjacent cysteines. The cytokine encoded by this gene displays chemotactic activity on resting T lymphocytes, a minimal activity on neutrophils, and is negative on monocytes and activated T lymphocytes. The protein is also a strong suppressor of colony formation by a multipotential hematopoietic progenitor cell line. [provided by RefSeq, Jul 2008],

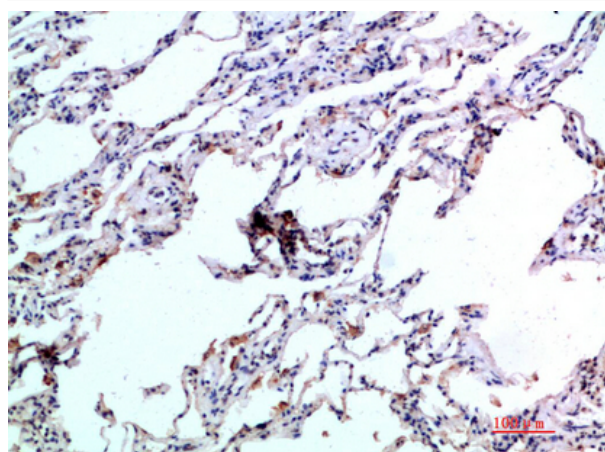
matters needing attention

Avoid repeated freezing and thawing!

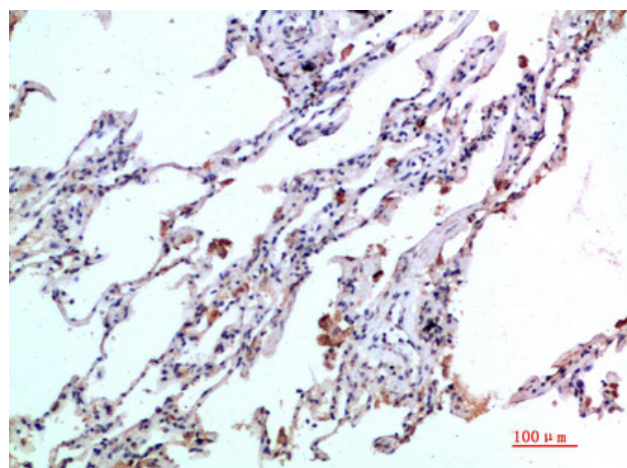
Usage suggestions

This product can be used in immunological reaction related experiments. For more information, please consult technical personnel.

Products Images



Immunohistochemical analysis of paraffin-embedded human-lung, antibody was diluted at 1:200



Immunohistochemical analysis of paraffin-embedded human-lung, antibody was diluted at 1:200

Nanjing BYabscience technology Co.,Ltd

网址: www.njbybio.com

官方热线: 025-5229-8998

监督电话: 15950492658