



IL-1F7 Polyclonal Antibody

Catalog No	BYab-10686
Isotype	IgG
Reactivity	Human;Rat;Mouse;
Applications	IHC;IF;ELISA
Gene Name	IL37 FIL1Z IL1F7 IL1H4 IL1RP1
Protein Name	Interleukin-37 (FIL1 zeta) (IL-1X) (Interleukin-1 family member 7) (IL-1F7) (Interleukin-1 homolog 4) (IL-1H) (IL-1H4) (Interleukin-1 zeta) (IL-1 zeta) (Interleukin-1-related protein) (IL-1RP1) (Inter
Immunogen	Synthetic peptide from human protein at AA range: 101-150
Specificity	The antibody detects endogenous IL-1F7
Formulation	Liquid in PBS containing 50% glycerol, 0.5% BSA and 0.02% sodium azide.
Source	Polyclonal, Rabbit,IgG
Purification	The antibody was affinity-purified from rabbit antiserum by affinity-chromatography using epitope-specific immunogen.
Dilution	IHC-p 1:50-200, ELISA 1:10000-20000. IF 1:50-200
Concentration	1 mg/ml
Purity	≥90%
Storage Stability	-20°C/1 year
Synonyms	Interleukin-37 (FIL1 zeta;IL-1X;Interleukin-1 family member 7;IL-1F7;Interleukin-1 homolog 4;IL-1H;IL-1H4;Interleukin-1 zeta;IL-1 zeta;Interleukin-1-related protein;IL-1RP1;Interleukin-23;IL-37)
Observed Band	
Cell Pathway	Cytoplasm, cytosol . Nucleus . Secreted . Stimulation with IL1B leads to colocalization with SMAD3 mostly in perinuclear regions (PubMed:20935647, PubMed:33674380). Only the CASP1-cleaved mature form translocates into the nucleus upon LPS stimulation (PubMed:18390730). The secretion is dependent on protein unfolding and facilitated by the cargo receptor TMED10; it results in protein translocation from the cytoplasm into the ERGIC (endoplasmic reticulum-Golgi intermediate compartment) followed by vesicle entry and secretion (PubMed:32272059, PubMed:33674380). .
Tissue Specificity	In general, low constitutive expression, if any, in healthy tissues; high expression in inflammatory counterparts, including in synovial tissues from individuals with active rheumatoid arthritis. Isoform A, isoform B and isoform C are expressed in testis, colon, placenta, lung and lymph node. Isoform D and isoform E were found only in testis and bone marrow. Whereas only isoform A is found in brain, only

Nanjing BYabscience technology Co.,Ltd



isoform B in kidney and only isoform C in heart.

Function

function: Binds to interleukin-18 receptor (IL-18R) receptor but not to IL-1 receptor. Could be a new player in the inflammatory and immune responses mediated by the IL-18/IL-18R axis., induction: By phorbol ester (PMA) in different cell lines., miscellaneous: The sequence shown here is derived from an EMBL/GenBank/DDBJ third party annotation (TPA) entry., online information: Interleukin-1 entry, similarity: Belongs to the IL-1 family., tissue specificity: Isoform A, isoform B and isoform C are expressed in testis, colon, placenta, lung and lymph node. Isoform D and isoform E were found only in testis and bone marrow. Whereas only isoform A is found in brain, only isoform B in kidney and only isoform C in heart.,

Background

The protein encoded by this gene is a member of the interleukin 1 cytokine family. This cytokine can bind to, and may be a ligand for interleukin 18 receptor (IL18R1/IL-1Rrp). This cytokine also binds to interleukin 18 binding protein (IL18BP), an inhibitory binding protein of interleukin 18 (IL18), and subsequently forms a complex with IL18 receptor beta subunit, and through which it inhibits the activity of IL18. This gene along with eight other interleukin 1 family genes form a cytokine gene cluster on chromosome 2. Five alternatively spliced transcript variants encoding distinct isoforms have been reported. [provided by RefSeq, Jul 2008],

matters needing attention

Avoid repeated freezing and thawing!

Usage suggestions

This product can be used in immunological reaction related experiments. For more information, please consult technical personnel.

Nanjing BYabscience technology Co.,Ltd

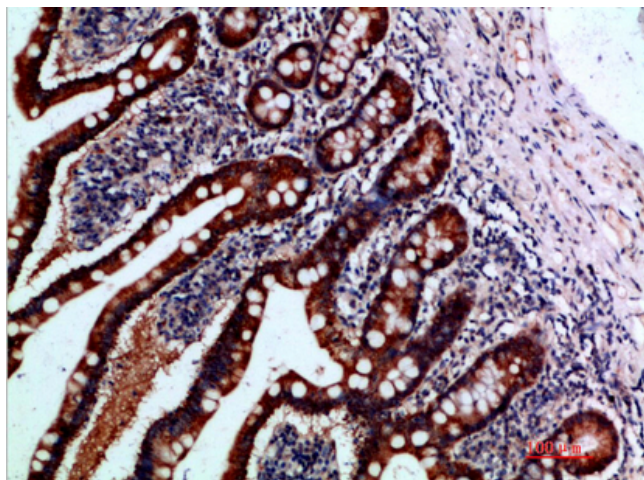
网址: www.njbybio.com

官方热线: 025-5229-8998

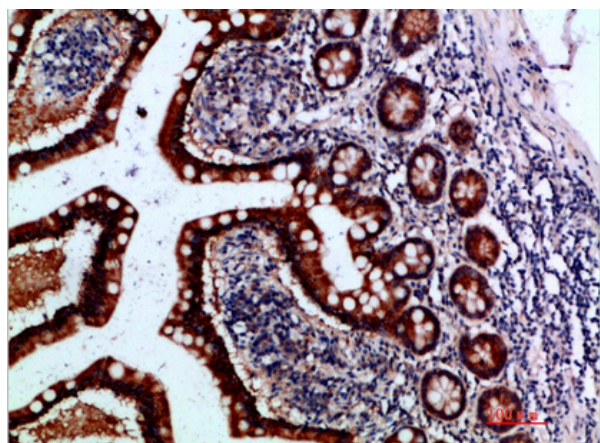
监督电话: 15950492658



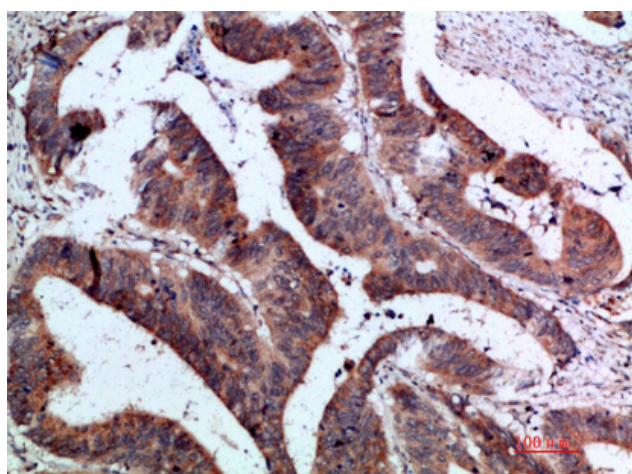
Products Images



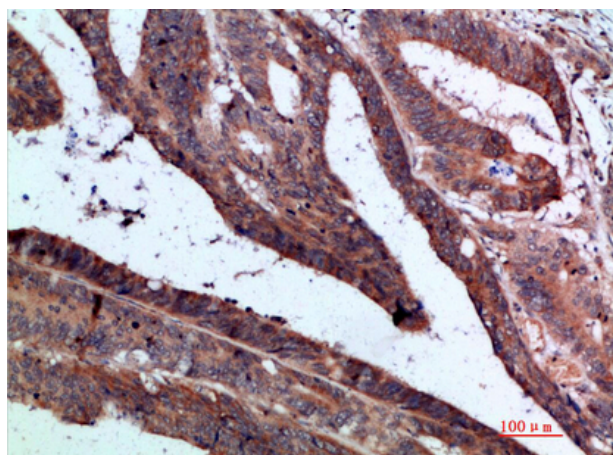
Immunohistochemical analysis of paraffin-embedded human-small-intestine, antibody was diluted at 1:200



Immunohistochemical analysis of paraffin-embedded human-small-intestine, antibody was diluted at 1:200



Immunohistochemical analysis of paraffin-embedded human-colon-cancer, antibody was diluted at 1:200



Immunohistochemical analysis of paraffin-embedded human-colon-cancer, antibody was diluted at 1:200