



CIS Polyclonal Antibody

Catalog No	BYab-10664
Isotype	IgG
Reactivity	Human;Mouse;Rat
Applications	IHC;IF;ELISA
Gene Name	CISH G18
Protein Name	Cytokine-inducible SH2-containing protein (CIS) (CIS-1) (Protein G18) (Suppressor of cytokine signaling) (SOCS)
Immunogen	Synthetic peptide from human protein at AA range: 30-90
Specificity	The antibody detects endogenous CIS
Formulation	Liquid in PBS containing 50% glycerol, 0.5% BSA and 0.02% sodium azide.
Source	Polyclonal, Rabbit,IgG
Purification	The antibody was affinity-purified from rabbit antiserum by affinity-chromatography using epitope-specific immunogen.
Dilution	IHC-p 1:50-200, ELISA 1:10000-20000. IF 1:50-200
Concentration	1 mg/ml
Purity	≥90%
Storage Stability	-20°C/1 year
Synonyms	Cytokine-inducible SH2-containing protein (CIS;CIS-1;Protein G18;Suppressor of cytokine signaling;SOCS)
Observed Band	
Cell Pathway	cytoplasm,cytosol,plasma membrane,
Tissue Specificity	Expressed in various epithelial tissues. Abundantly expressed in liver and kidney, and to a lesser extent in lung. The tissue distribution of isoforms 1 and 1B is distinct.
Function	disease:CISH deletion may be involved in the pathogenesis of renal cell carcinomas and of lung cancer since lung and kidney tumors frequently exhibit 3p21.3 deletions.,function:SOCS family proteins form part of a classical negative feedback system that regulates cytokine signal transduction. CIS is involved in the negative regulation of cytokines that signal through the JAK-STAT5 pathway such as erythropoietin, prolactin and interleukin 3 (IL3) receptor. Inhibits STAT5 trans-activation by suppressing its tyrosine phosphorylation. May be a substrate-recognition component of a SCF-like ECS (Elongin BC-CUL2/5-SOCS-box protein) E3 ubiquitin-protein ligase complex which mediates the ubiquitination and subsequent proteasomal degradation of target

Nanjing BYabscience technology Co.,Ltd



proteins.,induction:By a subset of cytokines including erythropoietin (EPO).,pathway:Protein modification; protein ubiquitination.,PTM:Association wi

Background

cytokine inducible SH2 containing protein(CISH) Homo sapiens The protein encoded by this gene contains a SH2 domain and a SOCS box domain. The protein thus belongs to the cytokine-induced STAT inhibitor (CIS), also known as suppressor of cytokine signaling (SOCS) or STAT-induced STAT inhibitor (SSI), protein family. CIS family members are known to be cytokine-inducible negative regulators of cytokine signaling. The expression of this gene can be induced by IL2, IL3, GM-CSF and EPO in hematopoietic cells. Proteasome-mediated degradation of this protein has been shown to be involved in the inactivation of the erythropoietin receptor. Multiple transcript variants encoding different isoforms have been found for this gene. [provided by RefSeq, Aug 2008],

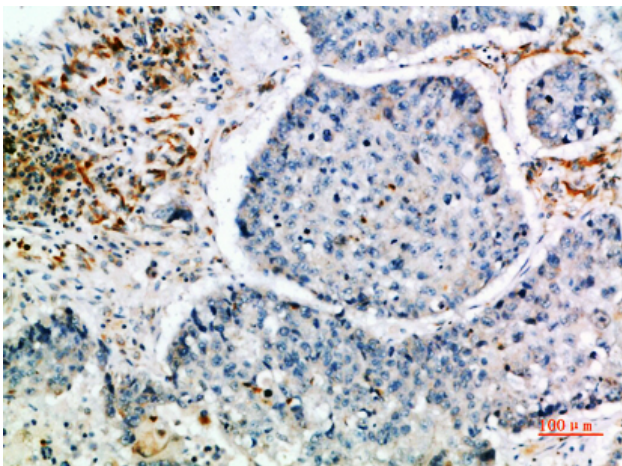
matters needing attention

Avoid repeated freezing and thawing!

Usage suggestions

This product can be used in immunological reaction related experiments. For more information, please consult technical personnel.

Products Images



Immunohistochemical analysis of paraffin-embedded human-lung-cancer, antibody was diluted at 1:200