



EPHA6 (Phospho-Tyr978) rabbit pAb

Catalog No	BYab-10561
Isotype	IgG
Reactivity	Human; Mouse;Rat
Applications	WB
Gene Name	EPHA6 EHK2 HEK12
Protein Name	EPHA6 (Phospho-Tyr978)
Immunogen	Synthesized peptide derived from human EPHA6 (Phospho-Tyr978)
Specificity	This antibody detects endogenous levels of EPHA6 (Phospho-Tyr978) at Human, Mouse,Rat
Formulation	Liquid in PBS containing 50% glycerol, and 0.217% sodium azide.
Source	Polyclonal, Rabbit,IgG
Purification	The antibody was affinity-purified from rabbit serum by affinity-chromatography using specific immunogen.
Dilution	WB 1:500-2000
Concentration	1 mg/ml
Purity	≥90%
Storage Stability	-20°C/1 year
Synonyms	Ephrin type-A receptor 6 (EC 2.7.10.1) (EPH homology kinase 2) (EHK-2) (EPH-like kinase 12) (EK12)
Observed Band	116kD
Cell Pathway	Membrane ; Single-pass type I membrane protein .
Tissue Specificity	Expressed in brain and testis.
Function	catalytic activity:ATP + a [protein]-L-tyrosine = ADP + a [protein]-L-tyrosine phosphate.,function:Receptor for members of the ephrin-A family.,similarity:Belongs to the protein kinase superfamily. Tyr protein kinase family. Ephrin receptor subfamily.,similarity:Contains 1 protein kinase domain.,similarity:Contains 1 SAM (sterile alpha motif) domain.,similarity:Contains 2 fibronectin type-III domains.,tissue specificity:Expressed in brain and testis.,
Background	

Nanjing BYabscience technology Co.,Ltd

网址: www.njbybio.com

官方热线: 025-5229-8998

监督电话: 15950492658



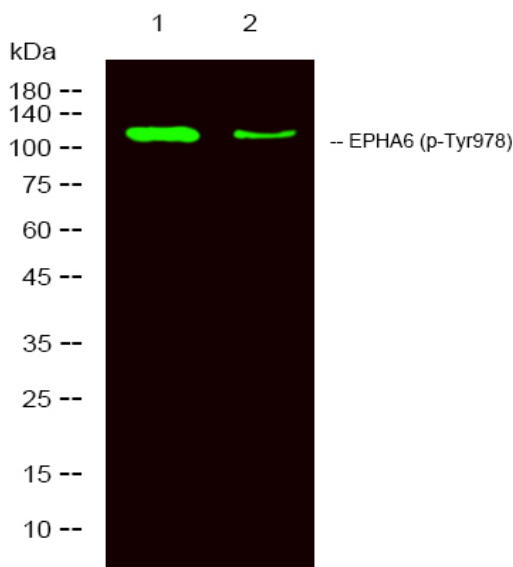
matters needing attention

Avoid repeated freezing and thawing!

Usage suggestions

This product can be used in immunological reaction related experiments. For more information, please consult technical personnel.

Products Images



Western Blot analysis of 1 HeLa, 2 treated with LPS 100ng/mL 20min, using primary antibody at 1:1000 dilution. Secondary antibody (catalog#:RS23920) was diluted at 1:10000

Nanjing BYabs science technology Co.,Ltd

网址: www.njbybio.com

官方热线: 025-5229-8998

监督电话: 15950492658