



SREBP-2 (Phospho-Ser455) rabbit pAb

Catalog No	BYab-10498
Isotype	IgG
Reactivity	Human; Mouse;Rat
Applications	WB
Gene Name	SREBF2 BHLHD2 SREBP2
Protein Name	SREBP-2 (Phospho-Ser455)
Immunogen	Synthesized peptide derived from human SREBP-2 (Phospho-Ser455)
Specificity	This antibody detects endogenous levels of SREBP-2 (Phospho-Ser455) at Human, Mouse,Rat
Formulation	Liquid in PBS containing 50% glycerol, and 0.154% sodium azide.
Source	Polyclonal, Rabbit,IgG
Purification	The antibody was affinity-purified from rabbit serum by affinity-chromatography using specific immunogen.
Dilution	WB 1:500-2000
Concentration	1 mg/ml
Purity	≥90%
Storage Stability	-20°C/1 year
Synonyms	Sterol regulatory element-binding protein 2 (SREBP-2) (Class D basic helix-loop-helix protein 2) (bHLHd2) (Sterol regulatory element-binding transcription factor 2) [Cleaved into: Processed sterol regulatory element-binding protein 2]
Observed Band	
Cell Pathway	[Sterol regulatory element-binding protein 2]: Endoplasmic reticulum membrane ; Multi-pass membrane protein . Golgi apparatus membrane ; Multi-pass membrane protein . Cytoplasmic vesicle, COPII-coated vesicle membrane ; Multi-pass membrane protein . At high sterol concentrations, the SCAP-SREBP is retained in the endoplasmic reticulum (PubMed:32322062). Low sterol concentrations promote recruitment into COPII-coated vesicles and transport of the SCAP-SREBP to the Golgi, where it is processed (PubMed:32322062). . ; [Processed sterol regulatory element-binding protein 2]: Nucleus . Transported into the nucleus with the help of importin-beta. Dimerization of the bHLH domain is a prerequisite for importin beta-dependent nuclear import. .
Tissue Specificity	Ubiquitously expressed in adult and fetal tissues.

Nanjing BYabscience technology Co.,Ltd



Function

function:Transcriptional activator required for lipid homeostasis. Regulates transcription of the LDL receptor gene as well as the cholesterol and to a lesser degree the fatty acid synthesis pathway (By similarity). Binds the sterol regulatory element 1 (SRE-1) (5'-ATCACCCCAC-3') found in the flanking region of the LDLR and HMG-CoA synthase genes.,PTM:At low cholesterol the SCAP/SREBP complex is recruited into COPII vesicles for export from the ER. In the Golgi complex SREBPs are cleaved sequentially by site-1 and site-2 protease. The first cleavage by site-1 protease occurs within the luminal loop, the second cleavage by site-2 protease occurs within the first transmembrane domain and releases the transcription factor from the Golgi membrane. Apoptosis triggers cleavage by the cysteine proteases caspase-3 and caspase-7.,similarity:Belongs to the SREBP family.,similarity:Contains 1 basic

Background

This gene encodes a member of the a ubiquitously expressed transcription factor that controls cholesterol homeostasis by regulating transcription of sterol-regulated genes. The encoded protein contains a basic helix-loop-helix-leucine zipper (bHLH-Zip) domain and binds the sterol regulatory element 1 motif. Alternate splicing results in multiple transcript variants. [provided by RefSeq, Jul 2013],

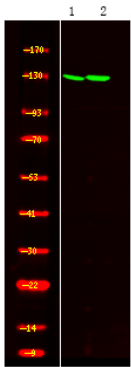
matters needing attention

Avoid repeated freezing and thawing!

Usage suggestions

This product can be used in immunological reaction related experiments. For more information, please consult technical personnel.

Products Images



Western Blot analysis of HUVEC cell, HEK-293T cell ,using primary antibody at 1:1000 dilution. Secondary antibody(catalog#:RS23920) was diluted at 1:10000