



ATG13 Rabbit Polyclonal Antibody

| | |
|---------------------------|--|
| Catalog No | BYab-10292 |
| Isotype | IgG |
| Reactivity | Human;Mouse;Rat |
| Applications | IHC;IF |
| Gene Name | ATG13 KIAA0652 |
| Protein Name | Autophagy-related protein 13 |
| Immunogen | Recombinant Protein of ATG13 |
| Specificity | The antibody detects endogenous ATG13 protein |
| Formulation | Liquid in PBS containing 50% glycerol, 0.5% BSA and 0.02% sodium azide. |
| Source | Polyclonal, Rabbit,IgG |
| Purification | The antibody was affinity-purified from rabbit antiserum by affinity-chromatography using epitope-specific immunogen. |
| Dilution | IHC-p 1:50-300. IF 1:50-200 |
| Concentration | 1 mg/ml |
| Purity | ≥90% |
| Storage Stability | -20°C/1 year |
| Synonyms | Autophagy-related protein 13 |
| Observed Band | 57kD |
| Cell Pathway | Cytoplasm, cytosol . Preautophagosomal structure . Under starvation conditions, is localized to punctate structures primarily representing the isolation membrane; the isolation membrane sequesters a portion of the cytoplasm resulting in autophagosome formation. . |
| Tissue Specificity | Amygdala,Brain, |
| Function | autophagic vacuole formation, autophagy, vacuole organization, cellular response to starvation, response to extracellular stimulus, macroautophagy, response to nutrient levels, cellular response to extracellular stimulus, cellular response to nutrient levels, cellular response to stress, response to starvation, |
| Background | The protein encoded by this gene is an autophagy factor and a target of the TOR kinase signaling pathway. The encoded protein is essential for autophagosome formation and mitophagy. [provided by RefSeq, Oct 2016], |

Nanjing BYabscience technology Co.,Ltd



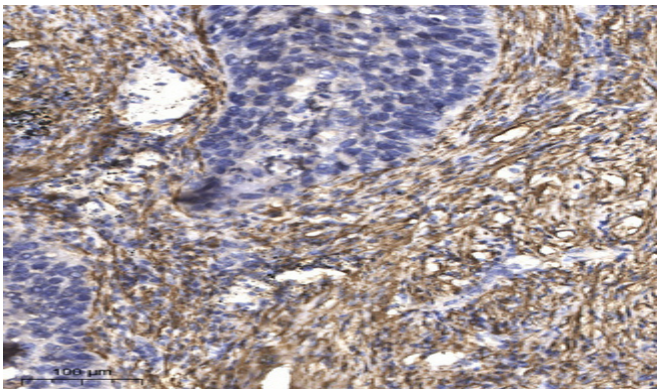
matters needing attention

Avoid repeated freezing and thawing!

Usage suggestions

This product can be used in immunological reaction related experiments. For more information, please consult technical personnel.

Products Images



Immunohistochemical analysis of paraffin-embedded human Squamous cell carcinoma of lung. 1, Antibody was diluted at 1:200(4° overnight). 2, Tris-EDTA,pH9.0 was used for antigen retrieval. 3,Secondary antibody was diluted at 1:200(room temperature, 45min).