



LACC1 rabbit pAb

| | |
|----------------------------------|--|
| Catalog No | BYab-09053 |
| Isotype | IgG |
| Reactivity | Human; Mouse |
| Applications | WB |
| Gene Name | LACC1 C13orf31 |
| Protein Name | LACC1 |
| Immunogen | Synthesized peptide derived from human LACC1 AA range: 4-54 |
| Specificity | This antibody detects endogenous levels of LACC1 at Human/Mouse |
| Formulation | Liquid in PBS containing 50% glycerol, 0.5% BSA and 0.02% sodium azide. |
| Source | Polyclonal, Rabbit,IgG |
| Purification | The antibody was affinity-purified from rabbit serum by affinity-chromatography using specific immunogen. |
| Dilution | WB 1: 500-2000 |
| Concentration | 1 mg/ml |
| Purity | ≥90% |
| Storage Stability | -20°C/1 year |
| Synonyms | |
| Observed Band | |
| Cell Pathway | Cytoplasm . Nucleus . Endoplasmic reticulum . Peroxisome . Upon stimulation of the pattern-recognition receptor (PRR) NOD2, localizes to the endoplasmic reticulum. . |
| Tissue Specificity | Ubiquitously expressed, with higher expression levels in immune-related tissues such as lymph nodes and spleen (PubMed:27959965). Expressed in both intestinal and peripheral myeloid-derived cells (PubMed:28593945). |
| Function | similarity:Belongs to the UPF0124 family., |
| Background | |
| matters needing attention | Avoid repeated freezing and thawing! |

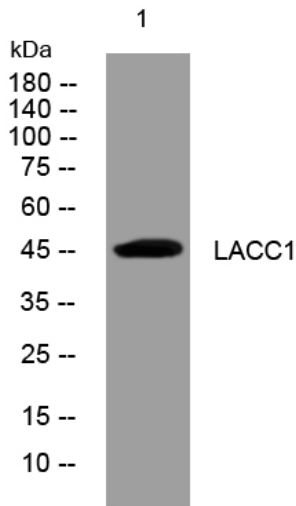
Nanjing BYabscience technology Co.,Ltd



Usage suggestions

This product can be used in immunological reaction related experiments. For more information, please consult technical personnel.

Products Images



Western blot analysis of lysates from PC-12 cells, primary antibody was diluted at 1:1000, 4° over night