



FBXL4 rabbit pAb

Catalog No	BYab-09003
Isotype	IgG
Reactivity	Human; Mouse
Applications	WB
Gene Name	FBXL4 FBL4 FBL5
Protein Name	FBXL4
Immunogen	Synthesized peptide derived from human FBXL4 AA range: 396-446
Specificity	This antibody detects endogenous levels of FBXL4 at Human/Mouse
Formulation	Liquid in PBS containing 50% glycerol, 0.5% BSA and 0.02% sodium azide.
Source	Polyclonal, Rabbit,IgG
Purification	The antibody was affinity-purified from rabbit serum by affinity-chromatography using specific immunogen.
Dilution	WB 1: 500-2000
Concentration	1 mg/ml
Purity	≥90%
Storage Stability	-20°C/1 year
Synonyms	
Observed Band	
Cell Pathway	Cytoplasm. Nucleus. Mitochondrion.
Tissue Specificity	Expressed in heart, kidney, liver, lung, pancreas, and placenta, but not in skeletal muscle.
Function	similarity:Contains 1 F-box domain.,similarity:Contains 8 LRR (leucine-rich) repeats.,subunit:Part of a SCF (SKP1-cullin-F-box) protein ligase complex.,tissue specificity:Expressed in heart, kidney, liver, lung, pancreas, and placenta, but not in skeletal muscle.,
Background	This gene encodes a member of the F-box protein family, which are characterized by an approximately 40 amino acid motif, the F-box. F-box proteins constitute one subunit of modular E3 ubiquitin ligase complexes, called SCF complexes, which function in phosphorylation-dependent ubiquitination. The F-box domain mediates protein-protein interactions and binds directly to S-phase kinase-associated protein 1. In addition to an F-box domain, the encoded protein contains at least 9 tandem leucine-rich repeats. The ubiquitin ligase complex containing the encoded

Nanjing BYabscience technology Co.,Ltd



protein may function in cell-cycle control by regulating levels of lysine-specific demethylase 4A. Alternative splicing results in multiple transcript variants. [provided by RefSeq, Jul 2013],

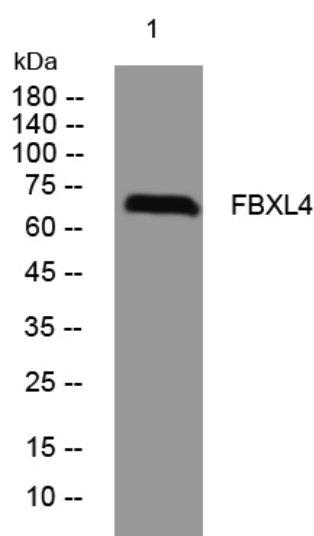
matters needing attention

Avoid repeated freezing and thawing!

Usage suggestions

This product can be used in immunological reaction related experiments. For more information, please consult technical personnel.

Products Images



Western blot analysis of lysates from HEK293 cells, primary antibody was diluted at 1:1000, 4° over night