



TRAIP rabbit pAb

Catalog No	BYab-08822
Isotype	IgG
Reactivity	Human; Mouse
Applications	WB
Gene Name	TRAIP RNF206 TRIP
Protein Name	TRAIP
Immunogen	Synthesized peptide derived from human TRAIP AA range: 399-449
Specificity	This antibody detects endogenous levels of TRAIP at Human/Mouse
Formulation	Liquid in PBS containing 50% glycerol, 0.5% BSA and 0.02% sodium azide.
Source	Polyclonal, Rabbit,IgG
Purification	The antibody was affinity-purified from rabbit serum by affinity-chromatography using specific immunogen.
Dilution	WB 1: 500-2000
Concentration	1 mg/ml
Purity	≥90%
Storage Stability	-20°C/1 year
Synonyms	
Observed Band	
Cell Pathway	Nucleus, nucleoplasm . Nucleus, nucleolus . Chromosome . Cytoplasm. Cytoplasm, perinuclear region . In the nucleus, found in close proximity to PCNA, suggesting localization at replication foci (PubMed:26595769). Localizes to DNA damage sites in response to replication stress (PubMed:26781088, PubMed:26595769, PubMed:26711499). .
Tissue Specificity	
Function	function:Inhibits activation of NF-kappa-B mediated by TNF.,similarity:Contains 1 RING-type zinc finger.,subunit:Binds TRAF1 and TRAF2 and is part of the receptor-TRAF signaling complex (By similarity). Interacts with CYLD.,
Background	This gene encodes a protein that contains an N-terminal RING finger motif and a putative coiled-coil domain. A similar murine protein interacts with TNFR-associated factor 1 (TRAF1), TNFR-associated factor 2 (TRAF2), and cylindromatosis. The interaction with TRAF2 inhibits TRAF2-mediated nuclear factor kappa-B, subunit 1 activation that is required for cell activation and

Nanjing BYabscience technology Co.,Ltd



protection against apoptosis. [provided by RefSeq, Jul 2008],

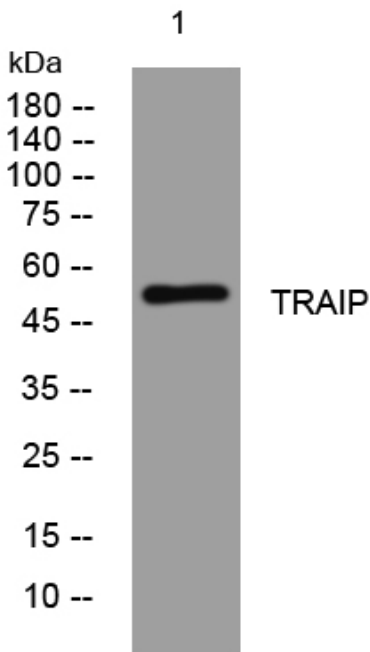
matters needing attention

Avoid repeated freezing and thawing!

Usage suggestions

This product can be used in immunological reaction related experiments. For more information, please consult technical personnel.

Products Images



Western blot analysis of lysates from VEC cells, primary antibody was diluted at 1:1000, 4° over night