



C2C4A rabbit pAb

Catalog No	BYab-08743
Isotype	IgG
Reactivity	Human;Rat;Mouse;
Applications	WB
Gene Name	C2CD4A FAM148A NLF1
Protein Name	C2C4A
Immunogen	Synthesized peptide derived from human C2C4A AA range: 209-259
Specificity	This antibody detects endogenous levels of C2C4A at Human
Formulation	Liquid in PBS containing 50% glycerol, 0.5% BSA and 0.02% sodium azide.
Source	Polyclonal, Rabbit,IgG
Purification	The antibody was affinity-purified from rabbit serum by affinity-chromatography using specific immunogen.
Dilution	WB 1: 500-2000
Concentration	1 mg/ml
Purity	≥90%
Storage Stability	-20°C/1 year
Synonyms	
Observed Band	
Cell Pathway	Nucleus .
Tissue Specificity	Specifically expressed in endothelial cells.
Function	function:May be involved in inflammatory process. May regulate cell architecture and adhesion.,induction:Up-regulated by pro-inflammatory cytokines.,similarity:Belongs to the FAM148 family.,similarity:Contains 1 C2 domain.,tissue specificity:Specifically expressed in endothelial cells.,
Background	
matters needing attention	Avoid repeated freezing and thawing!

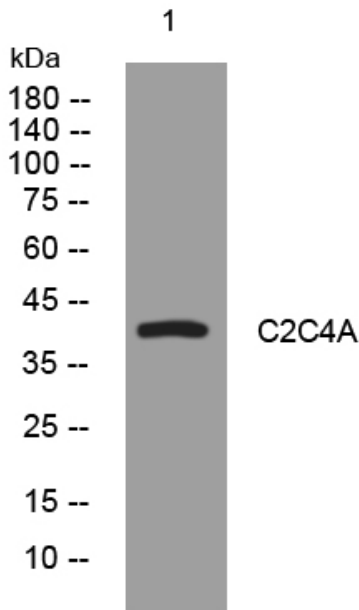
Nanjing BYabscience technology Co.,Ltd



Usage suggestions

This product can be used in immunological reaction related experiments. For more information, please consult technical personnel.

Products Images



Western blot analysis of lysates from DU145 cells, primary antibody was diluted at 1:1000, 4° over night